

Rear-Ventilated GalaxyPro® GP3 and GP4 Display Installation Quick Guide

Complete these steps in order during the installation process.

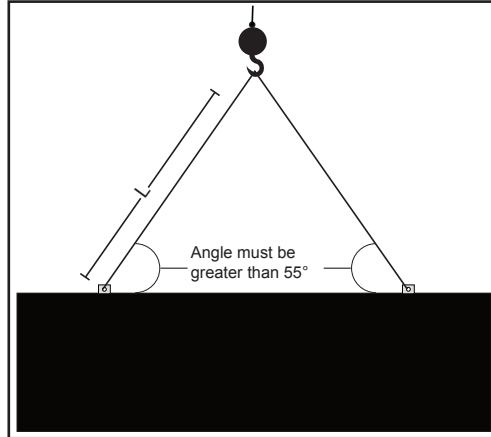
Step 1: Display Mounting

Refer to Section 3 of display manual for additional information.

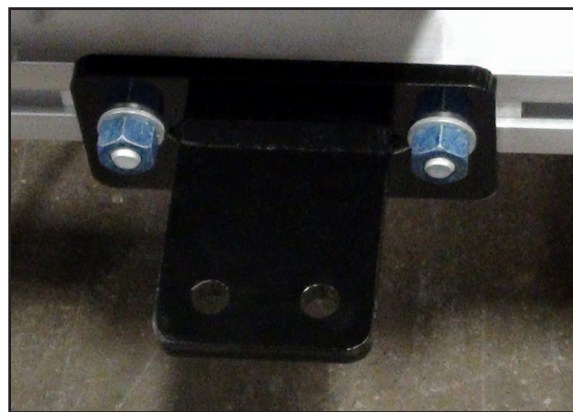
Note: For Multi-Section Displays – See reverse side of this document for section splicing instructions.

- Lift the display into position on support structure. Refer to label at lift eyes for information.

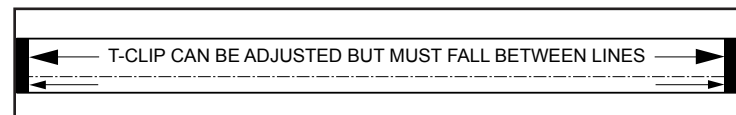
- Maintain a 55-degree or greater angle between display and lift straps.
- Do not adjust or remove lift eyes.
- Do not lift display in wind speeds greater than 20 mph.



- Weld or bolt ALL T-clips to support structure.



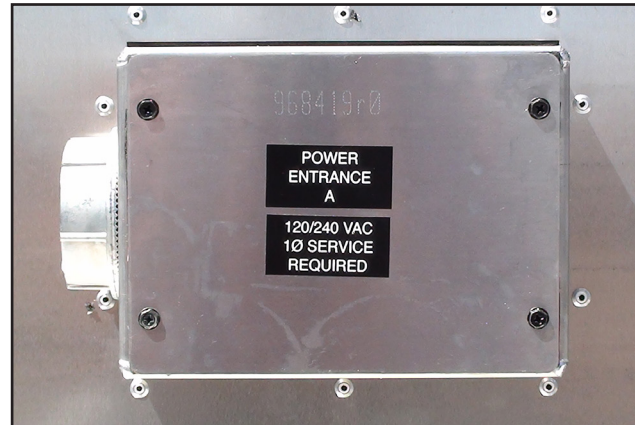
Note: T-clips can be adjusted within the guidelines of the label located at each T-clip.



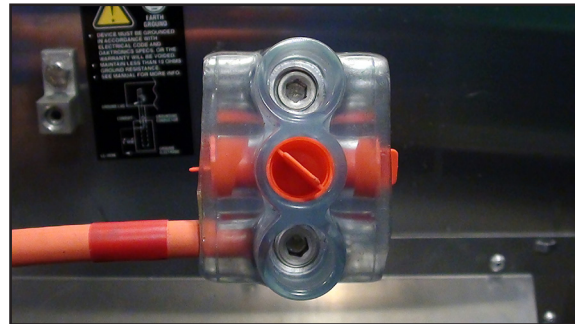
Step 2: Power Installation

Refer to Section 5 of display manual or shop drawing for additional information.

- Open power entrance.
- Connect conduit to 2" Myers hub on the left side of the power entrance located on back of display.



- Connect primary power lines to appropriate taps in enclosure – refer to label on enclosure for wiring diagram.



- Reinstall power entrance cover.
- Connect grounding electrode to ground lug on each section.



Step 3: External Cable Installation

Refer to Section 7 of display manual for additional information.

Note: Refer to label on back of display for cable routing.

- Install fiber quick-connect cables between display sections when applicable.



- Install fiber quick-connect cable between Primary and Mirror display faces when applicable.



Note: Remove protective cap from cables.

Step 4: Communications Installation

Refer to communications manual or section 8 in display manual for additional information.

- Mount display communications enclosure (wire Ethernet, fiber Ethernet or radio) according to guidelines in communications manual.
- Route quick-connect cables from enclosure to Primary display quick connect.
- Connect cables to quick-connect on back of display.
- Make interior connections to customer's network or directly to control computer.

Step 5: Turn Display On

Observe boot sequence shown on the display to get the IP Address or DHCP name.

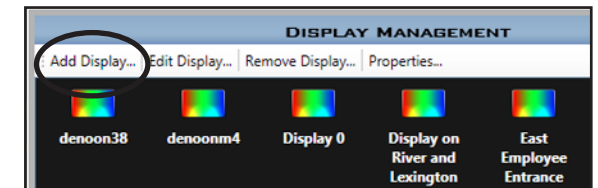
Note: Boot time is approximately 3 minutes.

Step 6: Venus 1500 Software Configuration

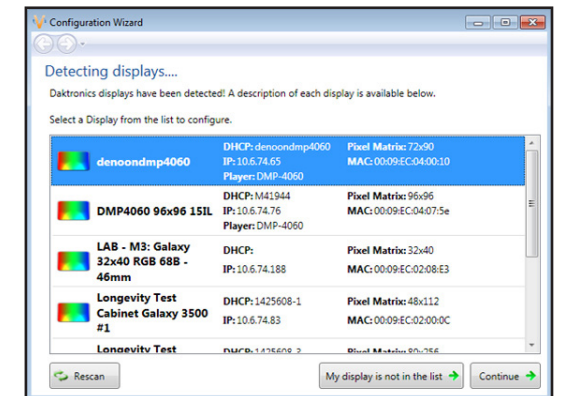
Refer to Section 9 of display manual for additional information.

- Click **Start > All Programs > Daktronics > Venus 1500 V4** to verify Venus 1500 is installed on the control computer.
- Click **Application button > Configure > Displays** to launch the display configuration wizard in Venus 1500.

- Click **Add Display**.



- Select the customer's display from the list and click **Continue**.



- Enter the customer's password on the **Authentication Page**. Click **Continue**. The default password for GP4 displays is **DakPassword!**.

- Name the display. Click **Continue**.

- Select the correct time zone for the display's location.

- Click **Finish** in the Summary window. The new display appears in the Display Management window.

- Close the **Display Management** window to return to the **Home** tab view.

Rear-Ventilated GalaxyPro® GP3 and GP4 Display Section Splicing Instructions

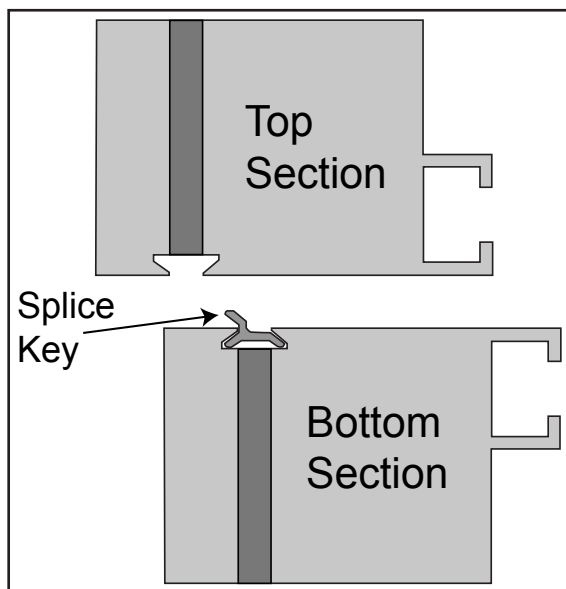
Section Splice Instructions

Refer to Section 4 of display manual for additional information.

Due to size, some displays ship in multiple sections. A sectional display consists of multiple sections to form a single display face.

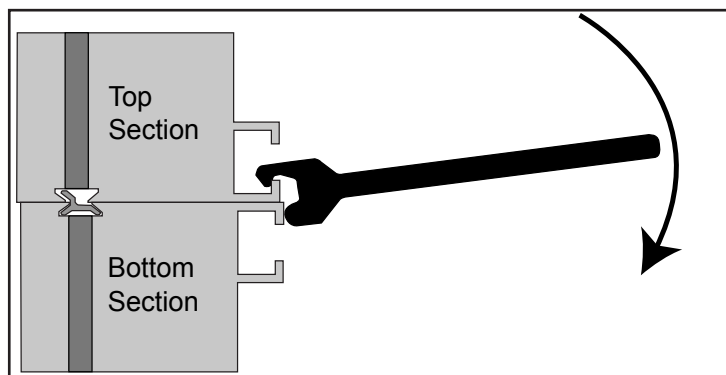
Note: Section splicing can be completed at ground level if the display is no more than two sections tall.

1. Ensure splice key is in channel on bottom section.



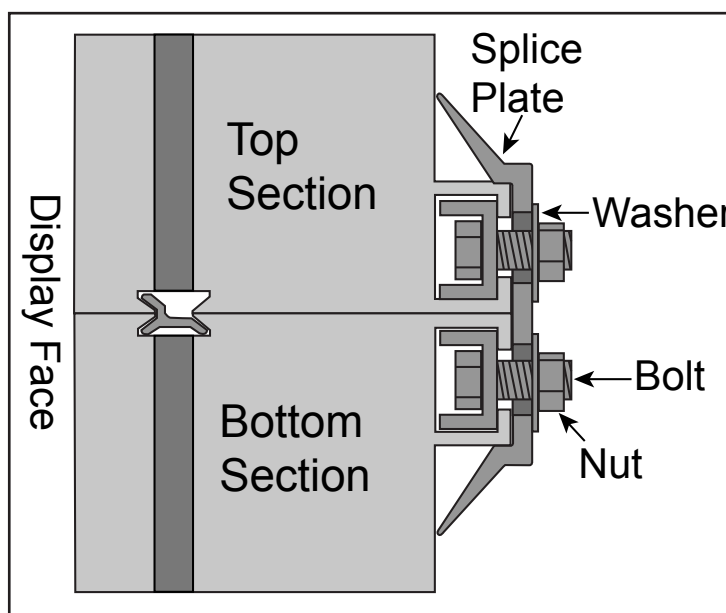
2. Attach crane to top section.
3. Unbolt top section from truck.
4. Lift top section and spin 180 degrees.
5. Lower top section until splice key engages.

6. Use splice wrench to draw sections together.



7. Connect splice plates and splice T-clips to both sections.

8. Tighten all nuts on all splice plates and splice T-clips.



9. Refer to Step 1: Display Mounting on reverse side.