

Production Board

User Manual

Title Page

© 2001 Data Display Ltd

No part of this document may be reproduced by any process without the prior written permission from Data Display Ltd.

The information in this document is provided for reference only. While every effort has been made to make sure it is accurate and complete, Data Display Ltd does not accept any liability arising out of the application or use of the information or products described herein. Moreover, Data Display Ltd reserves the right to alter specifications or procedures without notice.

This document may contain or refer to information or products protected by copyright or patents and does not convey any license under the patent rights of Data Display Ltd nor the rights of others.

All products referred herein are trademarks of their respective owners.

Publication details:

Title: Production Board User Manual

Issue: 1

Issue Date: 14-Feb-01

Part Number: DD5244

Produced by:

Product Support Department

Data Display Ltd

Deerpark Industrial Estate

Ennistymon, Co. Clare

Ireland

Printed in Ireland

Table of Contents

1. INTRODUCTION	3
1.1. SCOPE	3
1.2. PURPOSE	3
1.3. SYSTEM.....	3
2. INSTALLATION	4
2.1. UNPACKING.....	4
2.2. HARDWARE.....	4
2.3. SOFTWARE	4
3. OPERATING INSTRUCTIONS	5
3.1. SENDING INFORMATION TO THE DISPLAY	5
3.2. MESSAGE EDITOR	5
3.3. SET THE TIME AND DATE	6
4. MAINTENANCE	7
4.1. MAINTENANCE INSTRUCTIONS	7
4.1.1. <i>Preventative Maintenance</i>	7
4.1.2. <i>Cleaning the Display</i>	7
4.1.3. <i>Corrective Maintenance</i>	7
4.1.4. <i>Special Measures following a Stoppage</i>	8
4.2. HANDLING EQUIPMENT	8
4.3. SPECIAL TOOLS	8
5. PRODUCT SPECIFICATIONS	8

1. Introduction

1.1. *Scope*

The scope of this document covers the operation and maintenance of the *Production Board Display System*.

1.2. *Purpose*

The purpose of the document is to provide the relevant information to enable the user to install, operate and maintain the Production Board correctly.

1.3. *System*

The system consists of a Production Board connected directly to the COMMs port of the host PC via an RS232 serial cable.

The Board is a three line Display with 2 lines of 5 characters and a single scrolling line of 16 characters on the bottom.

The primary function of the Databoard section is to provide a visual monitoring facility for the Production line. This is achieved by setting *TARGET* figures and showing current *ACTUAL* figures on the Display.

General messages and information may be shown on the 16 character Dataline section.

ProdnSDS, a windows based software package is used to control the information on the Display.

Warning

Only trained and authorised personnel should do tests and maintenance on this Display Board System.

2. Installation

2.1. Unpacking

Carefully remove the items from their package and store the packaging safely. After unpacking, inspect the contents for any damage that may have occurred during shipment.

2.2. Hardware

The Display Board(s) should be located in a position where there is unrestricted viewing of the front face of the Board. Also locations where the Board is subject to bright lights or direct sunlight should be avoided. Mount the Board securely and connect the cables as shown in the figure below.

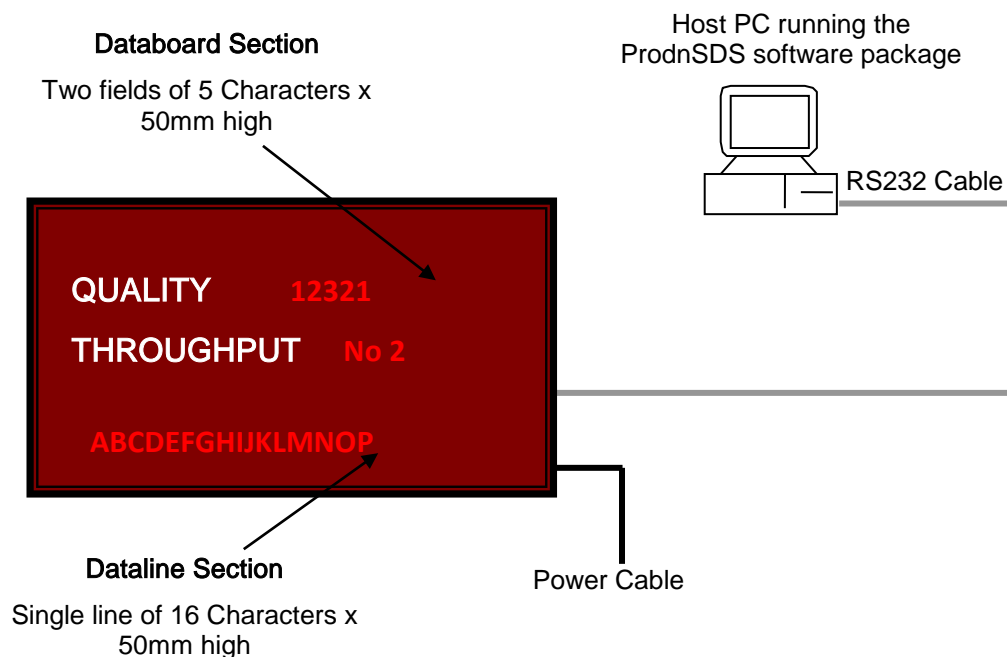


Figure 1 – System Configuration.

2.3. Software

The *ProdnSDS* software package is supplied in floppy disk format. Using MS Dos, type 'A:\setup' at the prompt command. To install the *ProdnSDS* software from the floppy disk using Windows 95/98, do the following:

1. Insert the disk in the floppy drive
2. Click the *Start* button and click on *Run*
3. Type 'A:\setup' and click on the *OK* button
4. Follow the on-screen installation instructions.

ProdnSDS.exe and all relevant files should now be installed in the C:\ProdnSDS directory.

3. Operating Instructions

Use the *ProdnSDS* software to enter and send information to the Display Board. Double-click on the *ProdnSDS* icon to run the program, *ProdnSD.exe*.

3.1. Sending information to the Display

The information shown on the Databoard section (5 character fields), of the Production Board is entered manually using the *ProdnSDS* software package supplied with the Board. At any time, each field may be edited individually and the values sent to the Board by clicking on the *Send* button.

To send values to the Databoard section, do the following steps:

1. Run the *ProdnSDS* software
2. Enter the values in the *QUALITY* and *THROUGHPUT* fields
3. Select the Board from the drop down list
4. Click the *Send to* button.

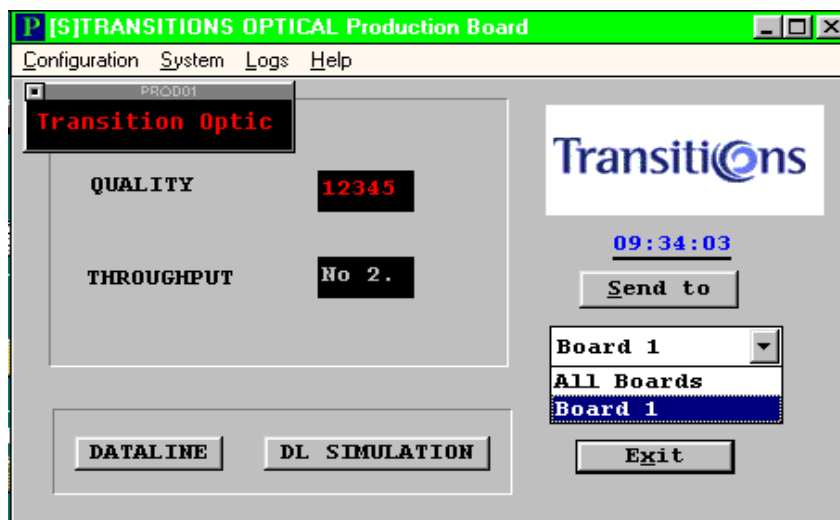


Figure 2 - Software User Interface.

3.2. Message Editor

To send text to the 16 character Dataline section of the Display, click on the *DATALINE* button to open the Message Editor Interface. Enter your text message in the text box and click on the 'SELECT' button. The message is now added to the message list at the bottom.

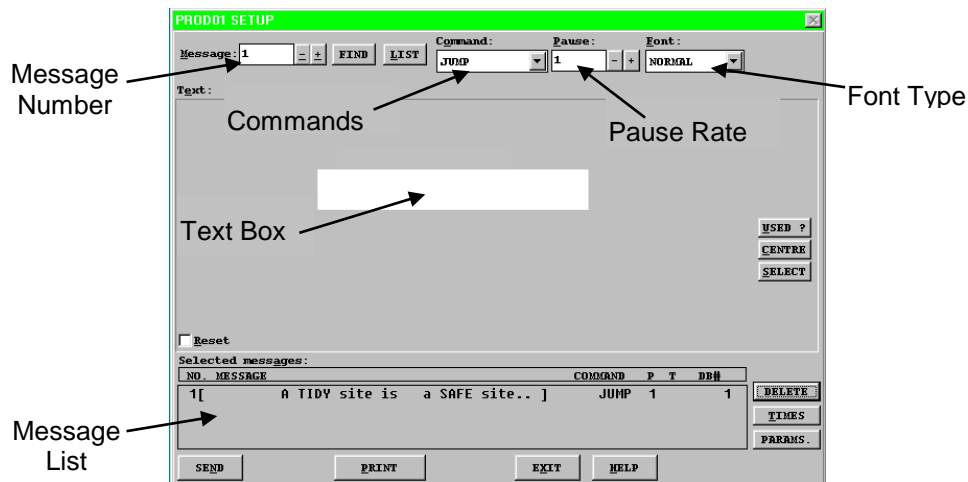


Figure 4 - Message Editor.

Click on the *SEND* button twice to send the new text message to the Display

To edit a text message, click the message number (+/-) to show the message in the text box. Make the changes to the text message and click on the *SEND* button. The changes to the message are shown in the message list. Click on the *SEND* button again to send the new changes to the Display.

Various Commands, Pause Rates and Font Types can be selected from the drop down lists to give your message more effect. Please refer to the SDS User Manual for further details.

When messages are sent to the Display, click on the *DL SIMULATION* button to view the text message currently being shown on the Display.

3.3. Set the Time and Date

When a message is sent to the Display, the Date and Time is set automatically.

Note: Make sure your PC is set to the correct Date and Time as this is the Date and Time that will be stored in the Displays memory.

4. Maintenance

Warning: *Disconnect the power supply before you remove any display panels. Make sure work area is clean and clear of tools and miscellaneous items of equipment after maintenance.*

4.1. Maintenance Instructions

4.1.1. Preventative Maintenance

Inspect the Display for defects before each operation. Do a visual check for the following:

- Damaged or dirty Lens
- Loose Cables
- Defective LEDs

4.1.2. Cleaning the Display

Routine cleaning of the Display Board is at the discretion of the operator and subject to local conditions. Use damp non-abrasive materials such as a sponge, or lint-free cloth and a soft detergent (washing-up liquid) to clean the Display. Remove difficult stains or marks with a suitable solvent. **DO NOT USE** sharp or metal objects.

4.1.3. Corrective Maintenance

To do maintenance tasks, unscrew the screws at the side of the Display and remove the Side Profile. Remove the Lens carefully and put in a safe place.

Replacing a defective Display Panel:

1. Unscrew the attaching screws and disconnect all relevant wiring
2. Replace the Display Panel and connect all wiring.

Replacing a defective Logic Board:

1. Unscrew the attaching nuts and disconnect all relevant wiring
2. Replace the Logic Board and connect all wiring.

Carefully slide the Lens back on the Display and attach the Side Profile. Clean the Display with a damp cloth and make sure the unit is watertight after all maintenance.

Replacing a defective Fuse:

1. Use a flat-head screwdriver to open the Fuse holder on the Display
2. Replace the Fuse
3. Close the Fuse Holder.

4.1.4. Special Measures following a Stoppage

If the Display is out of service for a long period of time, carefully remove the Display and store it in a cool dry place.

4.2. Handling Equipment

- One working platform
- Standard tool kit

4.3. Special Tools

There are no special tools required.

5. Product Specifications

CHARACTERISTIC	VALUE
DISPLAY No.	DD5244
DISPLAY TYPE	Production Board.
LED TYPE	Standard-bright Red
DIMENSIONS (LxHxD)	1100mm x 474mm x 75mm
EPROM	TBA
PROTOCOL	DB Win
BAUD RATE	1200
ADRESSING	P103
DATA FORMAT	8 bit, 1 stop bit, no parity
CHARACTER SET	Extended ASCII set
FUSE VALUE	3 Amp
VOLTAGE	240 Volts

Table 1 - Product Specifications.