

# Production Board

## User Manual

### *Title Page*

© 2000 Data Display Ltd

No part of this document may be reproduced by any process without the prior written permission from Data Display Ltd.

The information in this document is provided for reference only. While every effort has been made to make sure it is accurate and complete, Data Display Ltd does not accept any liability arising out of the application or use of the information or products described herein. Moreover, Data Display Ltd reserves the right to alter specifications or procedures without notice.

This document may contain or refer to information or products protected by copyright or patents and does not convey any license under the patent rights of Data Display Ltd nor the rights of others.

All products referred herein are trademarks of their respective owners.

Publication details:

*Title:* Production Board User Manual

*Issue:* 1

*Issue Date:* 15-Jun-00

*Part Number:* DDJ01905001

Produced by:

Product Support Department

Data Display Ltd

Deerpark Industrial Estate

Ennistymon, Co. Clare

Ireland

Printed in Ireland

## Table of Contents

<b>1. INTRODUCTION</b> .....	<b>3</b>
1.1. SCOPE .....	3
1.2. PURPOSE .....	3
1.3. SYSTEM.....	3
<b>2. INSTALLATION</b> .....	<b>4</b>
2.1. UNPACKING.....	4
2.2. HARDWARE.....	4
2.3. SOFTWARE .....	4
<b>3. OPERATING INSTRUCTIONS</b> .....	<b>5</b>
3.1. SETTING UP THE DISPLAY .....	5
3.2. SENDING INFORMATION TO THE DISPLAY .....	5
<b>4. MAINTENANCE</b> .....	<b>7</b>
4.1. MAINTENANCE INSTRUCTIONS .....	7
4.1.1. <i>Cleaning the Display</i> .....	7
4.1.2. <i>Preventative Maintenance</i> .....	7
4.1.3. <i>Corrective Maintenance</i> .....	7
4.1.4. <i>Special Measures following a Stoppage</i> .....	8
4.2. HANDLING EQUIPMENT .....	8
4.3. SPECIAL TOOLS .....	8
4.4. SPARE PARTS .....	8
4.5. RETURN OF EQUIPMENT .....	8
<b>5. PRODUCT SPECIFICATIONS</b> .....	<b>9</b>

## 1. Introduction

### 1.1. *Scope*

The scope of this document covers the Production Display Board.

### 1.2. *Purpose*

The purpose of the document is to provide the relevant information to enable the user to operate and maintain the Display Board correctly.

### 1.3. *System*

The system consists of a Production Display Board connected to an existing local network or directly to a PC via an RS232 connection.

The primary function of the Board is to show the comparison between actual production and target production and display general information.

The Board has two separate Databoard configurations. The top of the Board shows the *TARGET* and *ACTUAL* information and consists of six sections of five characters.

The bottom of the Board shows general text messages and consists of three lines with 20 characters on each line.

*ProdnSDS*, a windows based software package is used to edit and send data to the Board.

**Warning**

**Only trained and authorised personnel should do tests and maintenance on this Display Board System.**

## 2. Installation

### 2.1. Unpacking

Carefully remove the items from their package and store the packaging safely. After unpacking, inspect the contents for any damage that may have occurred during shipment. In the event of damage, refer to the **Return of Equipment** procedure section of this manual.

### 2.2. Hardware

The Display Board should be located in a position where there is unrestricted viewing of the front face of the Board. Also avoid locations where the Board is subject to bright lights or direct sunlight.

An internal network card and an RJ45 socket installed in the Display enables the Display to connect to the Local Area Network (LAN). The Display becomes part of the network similar to the PCs and printers and must be given an IP address. Use a networked PC to control the Display. The Display may also be connected directly to the serial port of a PC, resident on the network. Mount the Board securely and connect the cables as shown in the Figure below.

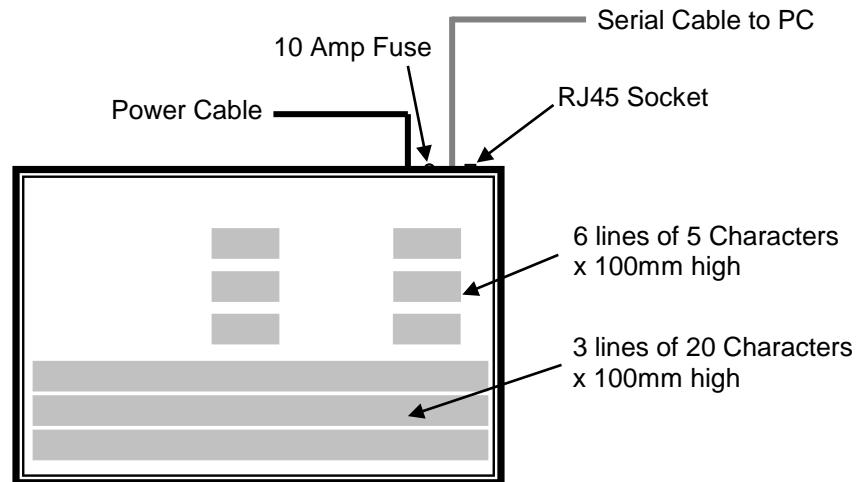


Figure 1 – System Configuration.

### 2.3. Software

The *ProdnSDS* software package is supplied in floppy disk format. Using MS Dos, type 'A:\install' at the prompt command. To install the *ProdnSDS* software from the floppy disk using Windows 95, do the following:

1. Insert the disk in the floppy drive
2. Click the *Start* button and click on *Run*
3. Type 'A:\install' and click *OK*.

Add *ProdnSDS* to the Start menu by creating a short-cut as described in your Windows 95 User Manual.

### 3. Operating Instructions

Use the *ProdnSDS* software to control the information for the Display Board. Double-click on the ProdnSDS icon to run the program. The software is password protected. When the Password dialog box appears, click on '*MANAGER*' as the Username and type '*M*' in the Password field, press the '*Enter*' key.



Figure 2 - Password Dialog Box.

#### 3.1. Setting up the Display

To use the Display on your local network, the Display must be assigned an IP address. This address should be assigned by your IT network administrator. The IP address must then be added to the ProdnSDS.ini file. Make sure your PC has Notepad.exe or similar ASCII editor installed to edit this file. To add the IP address, do the following steps:

1. Open the file '*ProdnSDS.ini*', the file should be located in the ProdnSDS folder.
2. Scroll down to the section of the file with the heading [*Netprinter*]
3. Add the IP address to the line '*NetIPAdd 1=194.122.122.123*'

#### 3.2. Sending information to the Display

The information shown on the *TARGET* and *ACTUAL* Databoard section of the Production Board is entered manually using the *ProdnSDS* software package supplied with the Board. At any time, each field may be edited individually and the values sent to the Board by clicking on the *Send* button.

To send values to the Databoard section, do the following steps:

1. Run the *ProdnSDS* software
2. Enter the numeric values in each line
3. Click the *Send* button.

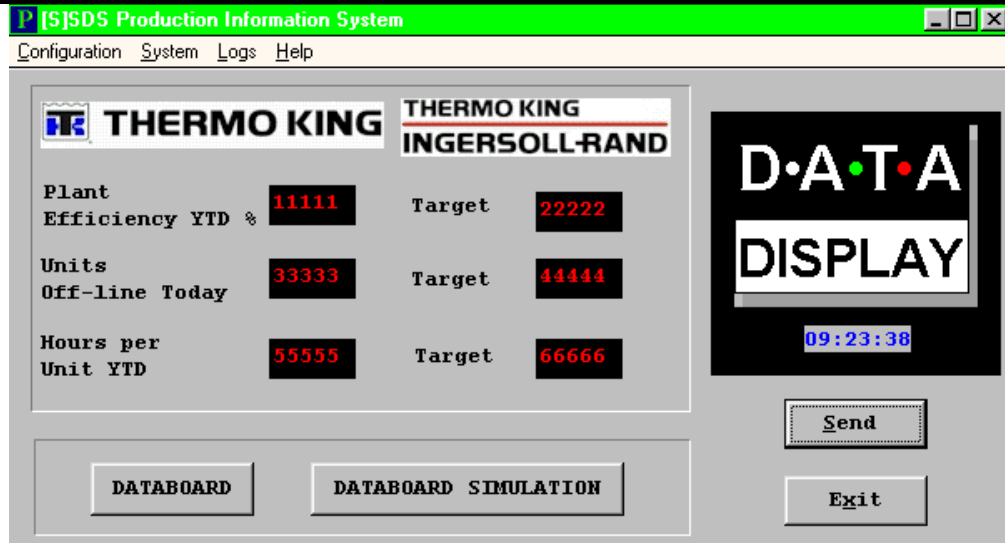


Figure 3 - ProdnSDS Software Interface.

To send text to the bottom section of the Display, click on the 'DATABOARD' button on the interface. All the functions and features for this interface are described in the SDS User Manual. Click on the 'DATA SIMULATION' button to view the text currently being displayed.

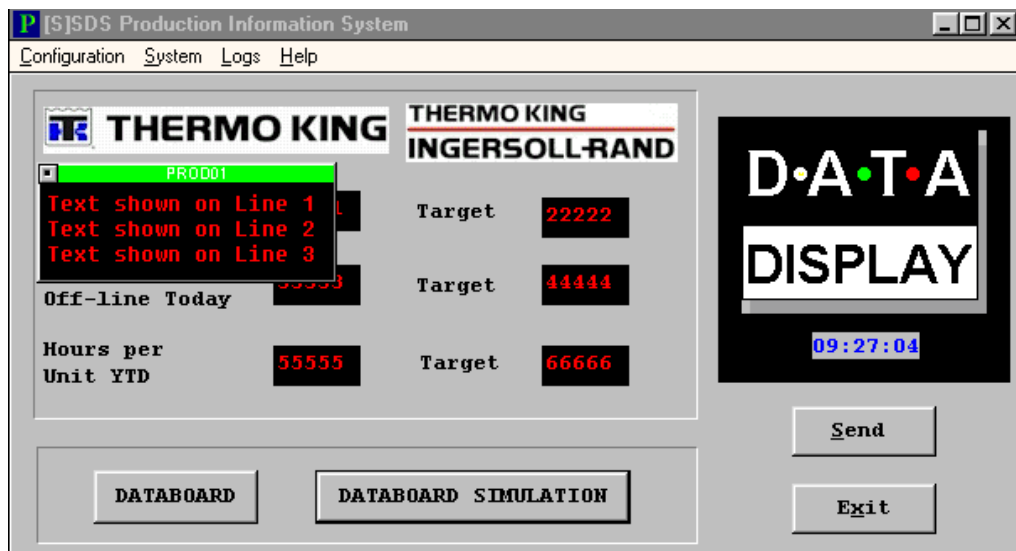


Figure 4 - Databoard Simulation.

## 4. Maintenance

*Warning: Disconnect the power supply before you remove any display panels. Make sure work area is clean and clear of tools and miscellaneous items of equipment after maintenance.*

### 4.1. Maintenance Instructions

#### 4.1.1. Cleaning the Display

Routine cleaning of the Display Board is at the discretion of the operator and subject to local conditions. Use damp non-abrasive materials such as a sponge, or lint-free cloth and a soft detergent (washing-up liquid) to clean the Display. Remove difficult stains or marks with a suitable solvent. **DO NOT USE** sharp or metal objects.

#### 4.1.2. Preventative Maintenance

Inspect the Display for defects before each operation. Do a visual check for the following:

- Damaged or dirty Lens
- Defective LEDs

#### 4.1.3. Corrective Maintenance

Replacing a defective LED:

1. Remove the side bracket and Lens of the Display
2. Loosen the attaching screws on the Display Panel
3. Disconnect wiring and remove the Display Panel
4. Remove solder from the rear of the defective LED
5. Replace the LED
6. Apply solder and wait to dry
7. Connect the wiring and attach the Display Panel
8. Slide in the Lens and attach the side bracket.

Replacing a defective Logic Board:

1. Remove the side bracket and Lens of the Display
2. Loosen the attaching screws on the Display Panel
3. Disconnect wiring and remove the Display Panel
4. Remove the Logic Board by unscrewing the attaching nuts
5. Replace the Logic Board and connect all wiring
6. Slide in the Lens and attach the side bracket.

**Replacing a defective Fuse:**

1. Use a flat-head screwdriver to open the Fuse holder on top of the Display
2. Replace the Fuse
3. Close the Fuse Holder.

Clean the Display with a damp cloth and make sure the unit is watertight after all maintenance.

**4.1.4. Special Measures following a Stoppage**

If the Display is out of service for a long period of time, carefully remove the Display and store it in a cool dry place.

**4.2. Handling Equipment**

- One working platform
- Standard tool kit

**4.3. Special Tools**

There are no special tools required.

**4.4. Spare Parts**

For spare parts, contact your nearest Data Display Customer Service Department.

Make sure to quote the Data Display No. in the Product Specifications section of this Manual and the Serial No of the display.

**4.5. Return of Equipment**

Follow the procedures listed below when returning a Display:

1. Disconnect all cables and carefully remove the Display from the mounting
2. Pack the Display in the original packing.
3. If the original container is not available, pack the Display in a wooden carton. Use cardboard and polystyrene wedges to protect and cushion the Display.
4. Mark carton(s) "THIS SIDE UP" , "THIS SIDE DOWN" and "FRAGILE" where appropriate.
5. Make sure to include with the Display the following information:

NAME

ADDRESS

TELEPHONE NUMBER

SERIAL NUMBER OF DISPLAY

DESCRIPTION OF THE PROBLEM

(A short description is sufficient)

Contact your nearest Data Display Customer Service Department and a suitable collection date and time will be arranged.



## 5. Product Specifications

CHARACTERISTIC	VALUE
<b><i>Display Features</i></b>	
Display Type	Production Board
Display Panel Type	DL405R
LED Diameter	5mm
LED Colour	Standard-Bright Red
<b><i>Communication</i></b>	
EPROM	DB320Y51DSNET, DB310Y51DSNET
Protocol	DB Win
Baud Rate	9600
Addressing	Dip Switch
Data Format	8 bit, 1 stop bit, no parity
Character Set	Extended ASCII set
<b><i>Electrical</i></b>	
Fuse Value	10 Amp
Main Power Supply	240 Volts
<b><i>Housing</i></b>	
Dimensions (LxHxD)	2000mm x 1500mm x 75mm
Housing Material	Aluminium
Housing Colour	Black
Lens Colour	Red
<b><i>Environmental Conditions</i></b>	
Temperature Range	-5°C to 65°C
Humidity Range	5% to 80% without condensation

***Table 1 - Product Specifications.***