

Production Board

User Manual

Title Page

© 2000 Data Display Ltd

No part of this document may be reproduced by any process without the prior written permission from Data Display Ltd.

The information in this document is provided for reference only. While every effort has been made to make sure it is accurate and complete, Data Display Ltd does not accept any liability arising out of the application or use of the information or products described herein. Moreover, Data Display Ltd reserves the right to alter specifications or procedures without notice.

This document may contain or refer to information or products protected by copyright or patents and does not convey any license under the patent rights of Data Display Ltd nor the rights of others.

All products referred herein are trademarks of their respective owners.

Publication details:

Title: Production Board User Manual

Issue: 1

Issue Date: 7-Jul-00

Part Number: DDJ02008001

Produced by:

Product Support Department

Data Display Ltd

Deerpark Industrial Estate

Ennistymon, Co. Clare

Ireland

Printed in Ireland

Table of Contents

1. INTRODUCTION	3
1.1. SCOPE	3
1.2. PURPOSE	3
1.3. SYSTEM.....	3
2. INSTALLATION	4
2.1. UNPACKING.....	4
2.2. HARDWARE.....	4
2.3. SOFTWARE	4
3. OPERATING INSTRUCTIONS	5
3.1. SENDING INFORMATION TO THE DISPLAY	5
3.2. SET THE TIME AND DATE	6
4. MAINTENANCE	7
4.1. MAINTENANCE INSTRUCTIONS	7
4.1.1. <i>Cleaning the Display</i>	7
4.1.2. <i>Preventative Maintenance</i>	7
4.1.3. <i>Corrective Maintenance</i>	7
4.1.4. <i>Special Measures following a Stoppage</i>	8
4.2. HANDLING EQUIPMENT	8
4.3. SPECIAL TOOLS	8
4.4. SPARE PARTS	8
4.5. RETURN OF EQUIPMENT	8
5. PRODUCT SPECIFICATIONS	9

1. Introduction

1.1. *Scope*

The scope of this document covers the Production Display Board.

1.2. *Purpose*

The purpose of the document is to provide the relevant information to enable the user to operate and maintain the Display Board correctly.

1.3. *System*

The system consists of a Production Display Board connected to an existing local PC via an RS232 connection.

The primary function of the Board is to show processing and quality of service information. This is the Databoard section of the Display while general text messages may be displayed on the bottom line or Dataline section.

ProdnSDS, a windows based software package is used to edit and send data to the Board.

Warning

Only trained and authorised personnel should do tests and maintenance on this Display Board System.

2. Installation

2.1. Unpacking

Carefully remove the items from their package and store the packaging safely. After unpacking, inspect the contents for any damage that may have occurred during shipment. In the event of damage, refer to the *Return of Equipment* procedure section of this manual.

2.2. Hardware

The Display Board should be located in a position where there is unrestricted viewing of the front face of the Board. Also avoid locations where the Board is subject to bright lights or direct sunlight.

Mount the Board securely and connect the cables as shown in the Figure below.

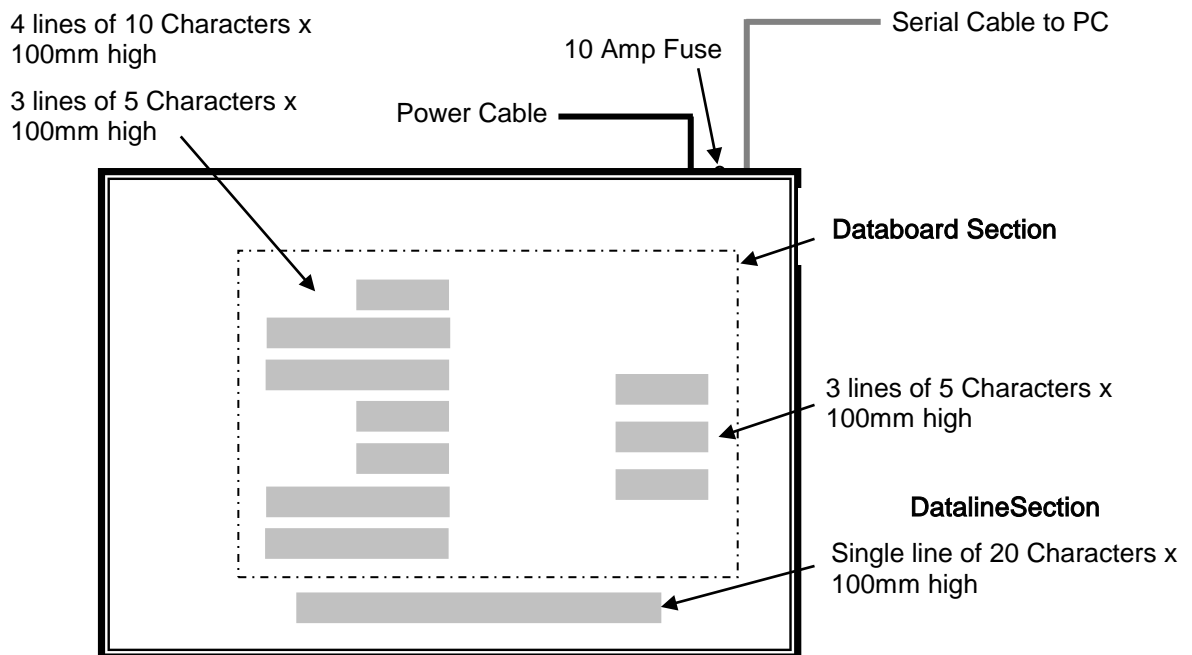


Figure 1 – System Configuration.

2.3. Software

The *ProdnSDS* software package is supplied in floppy disk format. Using MS Dos, type 'A:\install' at the prompt command. To install the *ProdnSDS* software from the floppy disk using Windows 95, do the following:

1. Insert the disk in the floppy drive
2. Click the *Start* button and click on *Run*
3. Type 'A:\install' and click *OK*.

Add *ProdnSDS* to the Start menu by creating a short-cut as described in your Windows 95 User Manual.

3. Operating Instructions

Use the *ProdnSDS* software to control the information for the Display Board. Double-click on the ProdnSDS icon to run the program.

3.1. Sending information to the Display

The information shown on the Databoard section of the Production Board is entered manually using the *ProdnSDS* software package supplied with the Board. At any time, each field may be edited individually and the values sent to the Board by clicking on the *Send* button.

To send values to the Databoard section, do the following steps:

1. Run the *ProdnSDS* software
2. Enter the numeric values in each line
3. Click the *Send* button.

Note: Make sure your Display Settings are set to 800 x 600 pixels.

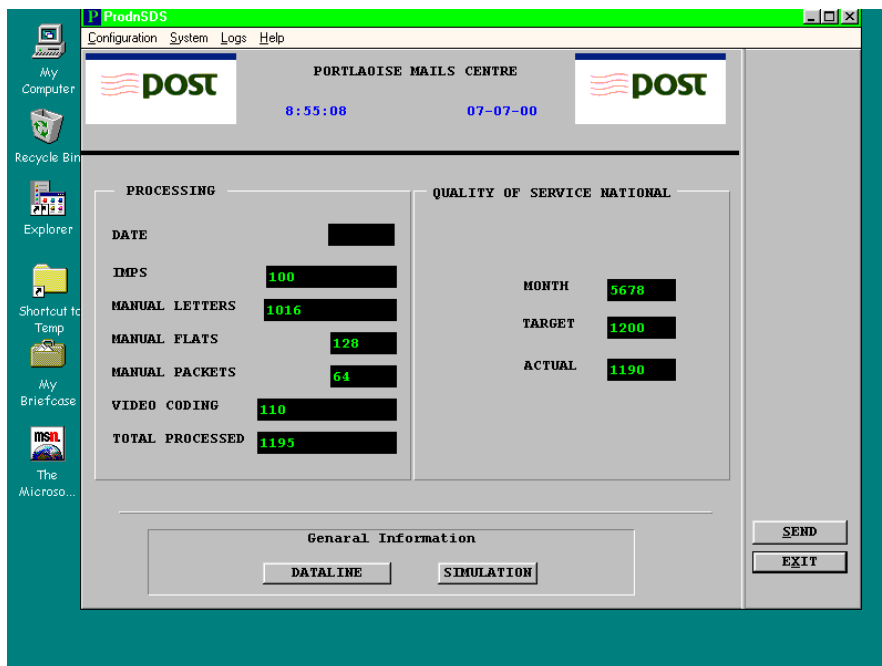


Figure 2 - ProdnSDS Software Interface.

To send text to the bottom section of the Display, click on the 'DATA LINE' button on the interface. All the functions and features for this interface are described in the SDS User Manual. Click on the 'SIMULATION' button to view the text message currently being displayed.

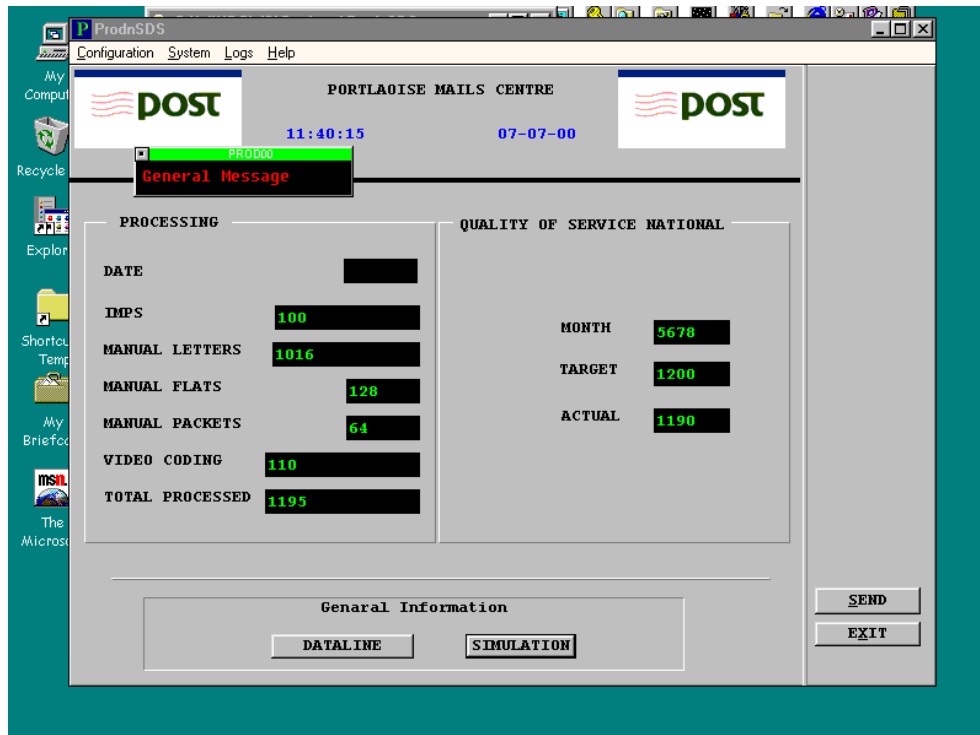


Figure 3 - Dataline Simulation.

3.2. Set the Time and Date

To set the current date, do the following steps:

1. Click on *Start > Programs > ProdnSDS*
2. Enter ****D** in the Date field
3. Click on *Configuration > Set Time*
4. On the dialog box, click on the 'Yes' button.

Note: Make sure your PC is set to the correct Date as this is the Date that will be displayed.

4. Maintenance

Warning: Disconnect the power supply before you remove any display panels. Make sure work area is clean and clear of tools and miscellaneous items of equipment after maintenance.

4.1. Maintenance Instructions

4.1.1. Cleaning the Display

Routine cleaning of the Display Board is at the discretion of the operator and subject to local conditions. Use damp non-abrasive materials such as a sponge, or lint-free cloth and a soft detergent (washing-up liquid) to clean the Display. Remove difficult stains or marks with a suitable solvent. **DO NOT USE** sharp or metal objects.

4.1.2. Preventative Maintenance

Inspect the Display for defects before each operation. Do a visual check for the following:

- Damaged or dirty Lens
- Defective LEDs

4.1.3. Corrective Maintenance

Replacing a defective LED:

1. Remove the side bracket and Lens of the Display
2. Loosen the attaching screws on the Display Panel
3. Disconnect wiring and remove the Display Panel
4. Remove solder from the rear of the defective LED
5. Replace the LED
6. Apply solder and wait to dry
7. Connect the wiring and attach the Display Panel
8. Slide in the Lens and attach the side bracket.

Replacing a defective Logic Board:

1. Remove the side bracket and Lens of the Display
2. Loosen the attaching screws on the Display Panel
3. Disconnect wiring and remove the Display Panel
4. Remove the Logic Board by unscrewing the attaching nuts
5. Replace the Logic Board and connect all wiring
6. Slide in the Lens and attach the side bracket.

Replacing a defective Fuse:

1. Use a flat-head screwdriver to open the Fuse holder on top of the Display
2. Replace the Fuse
3. Close the Fuse Holder.

Clean the Display with a damp cloth and make sure the unit is watertight after all maintenance.

4.1.4. Special Measures following a Stoppage

If the Display is out of service for a long period of time, carefully remove the Display and store it in a cool dry place.

4.2. Handling Equipment

- One working platform
- Standard tool kit

4.3. Special Tools

There are no special tools required.

4.4. Spare Parts

For spare parts, contact your nearest Data Display Customer Service Department.

Make sure to quote the Data Display No. in the Product Specifications section of this Manual and the Serial No of the display.

4.5. Return of Equipment

Follow the procedures listed below when returning a Display:

1. Disconnect all cables and carefully remove the Display from the mounting
2. Pack the Display in the original packing.
3. If the original container is not available, pack the Display in a wooden carton. Use cardboard and polystyrene wedges to protect and cushion the Display.
4. Mark carton(s) "THIS SIDE UP" , "THIS SIDE DOWN" and "FRAGILE" where appropriate.
5. Make sure to include with the Display the following information:

NAME

ADDRESS

TELEPHONE NUMBER

SERIAL NUMBER OF DISPLAY

DESCRIPTION OF THE PROBLEM

(A short description is sufficient)

Contact your nearest Data Display Customer Service Department and a suitable collection date and time will be arranged.

5. Product Specifications

CHARACTERISTIC	VALUE
<i>Display Features</i>	
Display Type	Production Board
Data Display Ref. No.	J02008001
Display Panel Type	DL405R, 18 off
LED Diameter	5mm
LED Colour	Standard-Bright Red
<i>Communication</i>	
EPROM	AnPOST.OBJ, ENG-20, D4.0
Protocol	DB Win
Baud Rate	9600
Addressing	Dip Switch
Data Format	8 bit, 1 stop bit, no parity
Character Set	Extended ASCII set
<i>Electrical</i>	
Fuse Value	10 Amp
Main Power Supply	240 Volts
<i>Housing</i>	
Dimensions (LxHxD)	2900mm x 2030mm x 90mm
Housing Material	Aluminium
Housing Colour	Black
Lens Colour	Red
<i>Environmental Conditions</i>	
Temperature Range	-5°C to 65°C
Humidity Range	5% to 80% without condensation

Table 1 - Product Specifications.