

Production Board (Coca Cola Enterprises) User Manual

Title Page

© 2002 Data Display Ltd

No part of this document may be reproduced by any process without the prior written permission from Data Display Ltd.

The information in this document is provided for reference only. While every effort has been made to make sure it is accurate and complete, Data Display Ltd does not accept any liability arising out of the application or use of the information or products described herein. Moreover, Data Display Ltd reserves the right to alter specifications or procedures without notice.

This document may contain or refer to information or products protected by copyright or patents and does not convey any license under the patent rights of Data Display Ltd nor the rights of others.

All products referred herein are trademarks of their respective owners.

Publication details:

Title: Production Board User Manual

Issue: 1

Issue Date: 4-Apr-02

Part Number: DDJ04770001

Produced by:

Product Support Department

Data Display Ltd

Deerpark Industrial Estate

Ennistymon, Co. Clare

Ireland

Printed in Ireland

Table of Contents

1. INTRODUCTION.....	3
1.1. SCOPE	3
1.2. PURPOSE	3
1.3. SYSTEM.....	3
2. INSTALLATION	4
2.1. UNPACKING.....	4
2.2. HARDWARE.....	4
2.3. SOFTWARE	4
3. OPERATING INSTRUCTIONS.....	5
3.1. SENDING INFORMATION TO THE DISPLAY	5
3.2. SET THE TIME AND DATE	6
4. MAINTENANCE	7
4.1. MAINTENANCE INSTRUCTIONS	7
4.1.1. Preventative Maintenance.....	7
4.1.2. Cleaning the Display.....	7
4.1.3. Corrective Maintenance	7
4.1.4. Special Measures following a Stoppage.....	8
4.2. HANDLING EQUIPMENT	8
4.3. SPECIAL TOOLS	8
5. PRODUCT SPECIFICATIONS	8

1. Introduction

1.1. Scope

The scope of this document covers the operation and maintenance of the *Production Board Display System*.

1.2. Purpose

The purpose of the document is to provide the relevant information to enable the user to install, operate and maintain the Production Board correctly.

1.3. System

The system consists of a Safety Display Board connected to a PC via RS232/RS485 cables and RS485 Transmitter Box.

The Board is a seven line Display with 5 characters on each line. The characters are 50mm high and use high-bright red LED technology.

The primary function of the Board is to show safety information such as:

- *TARGET* and *ACTUAL* number of accidents, *Year To Date*
- *LOST TIME ACCIDENTS*
- *DAYS SINCE LAST ACCIDENT*
- *NOTIFIABLE INJURY RATE*
- *SEVERITY RATE*

The values are shown in each of the relevant 5 character fields.

ProdnSDS, a windows based software package is used to control the information on the Display.

Warning

Only trained and authorised personnel should do tests and maintenance on this Display Board System.

2. Installation

2.1. Unpacking

Carefully remove the items from their package and store the packaging safely. After unpacking, inspect the contents for any damage that may have occurred during shipment.

2.2. Hardware

The Display Board(s) should be located in a position where there is unrestricted viewing of the front face of the Board. Also locations where the Board is subject to bright lights or direct sunlight should be avoided. Mount the Board securely and connect the cables as shown in the figure below.

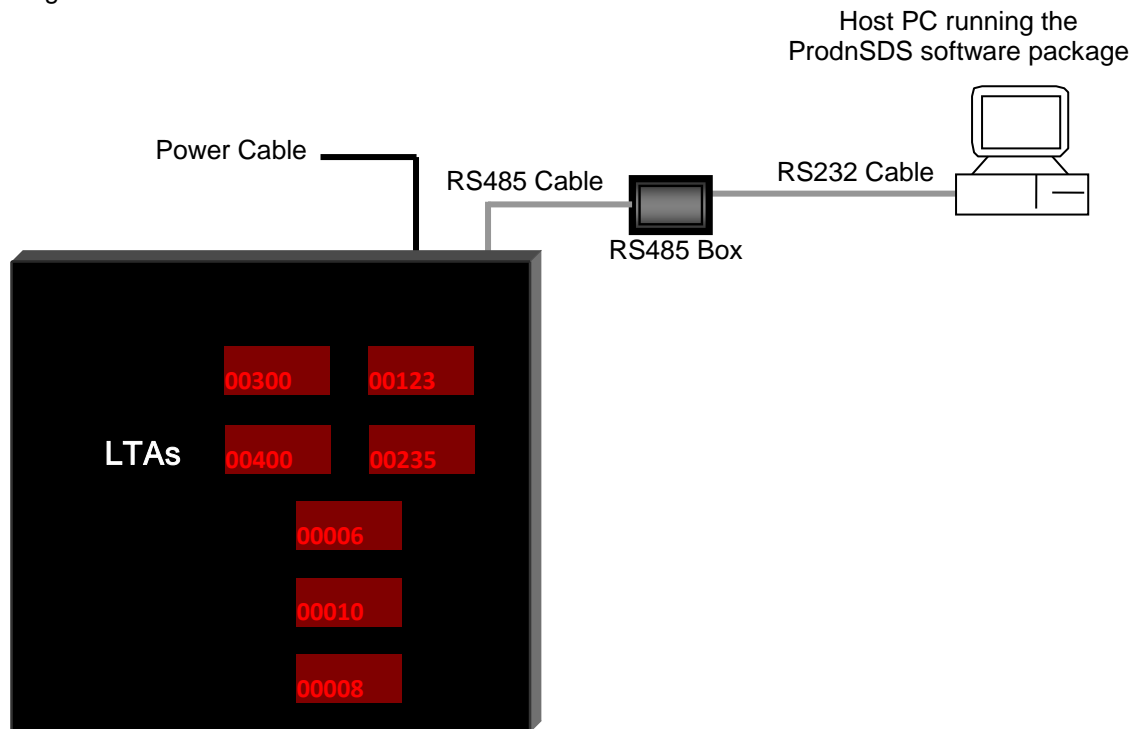


Figure 1 – System Configuration.

2.3. Software

The *ProdnSDS* software package is supplied in floppy disk format. Using MS Dos, type 'A:\setup' at the prompt command. To install the *ProdnSDS* software from the floppy disk using Windows 95/98, do the following:

1. Insert the disk in the floppy drive
2. Click the *Start* button and click on *Run*
3. Type 'A:\setup' and click on the *OK* button
4. Follow the on-screen installation instructions.

ProdnSDS.exe and all relevant files should now be installed in the *C:\ProdnSDS* directory.

3. Operating Instructions

Use the *ProdnSDS* software to enter and send information to the Display Board. Double-click on the *ProdnSDS* icon to run the program, *ProdnSD.exe*.

3.1. Sending information to the Display

Use the *ProdnSDS* software to enter information in the 5 character fields. At any time, each field may be edited individually and the values sent to the Board by clicking on the *Send* button. Note: When the Display is installed for the first time, the correct Time and Date must be downloaded to the Displays memory, *Ref. Section 3.2*.

To send values to the Display, do the following steps:

1. Run the *ProdnSDS* software
2. Enter the values in each field
3. Click the *Send to All* button.

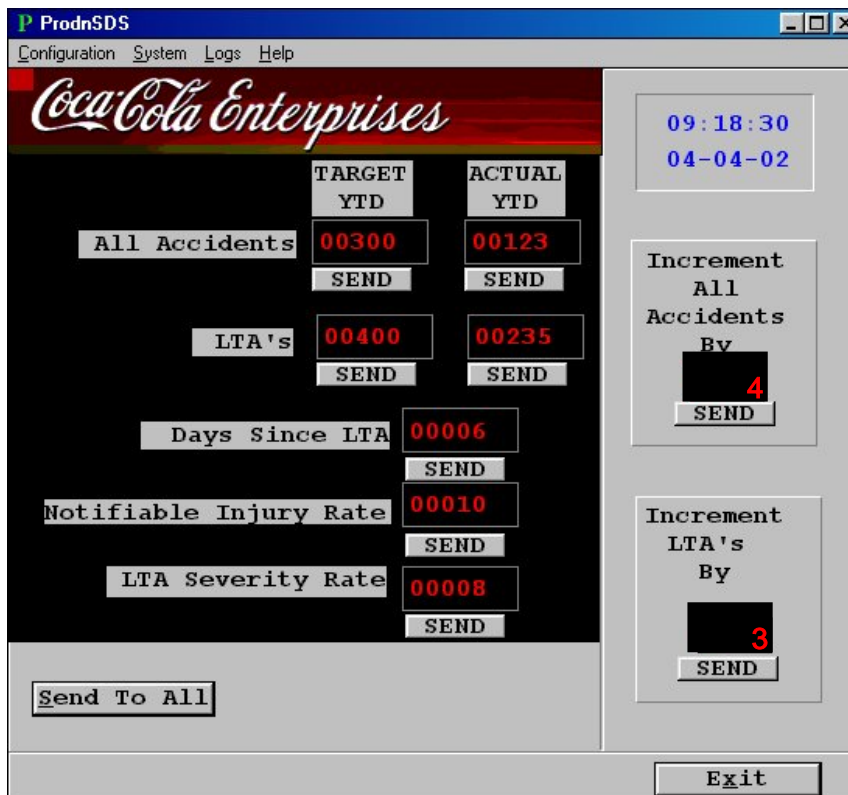


Figure 2 - Software User Interface.

The *DAYS since LTA* value increments by 1 after midnight. This will continue until an accident occurs, then the value of this field is reset to zero and starts incrementing again.

The *TARGET* values of the *All Accidents* and *LTA's* fields are automatically incremented at midnight, Sunday of each week. This value is set at the operators discretion and is entered in the two corresponding text boxes on the right of the User Interface. The values must be entered as right-justified, e.g. to enter 3, press the *SPACE* bar twice and press the **3** key on your keyboard.

3.2. Set the Time and Date

To set the current Time and Date, do the following steps:

1. Click on *Start > Programs > ProdnSDS*
2. Click on *Configuration > Set Time*
3. On the dialog box, click on the *Yes* button.

Note: Make sure your PC is set to the correct Date and Time as this is the Date and Time that will be stored in the Displays memory.

4. Maintenance

Warning: *Disconnect the power supply before you remove any display panels. Make sure work area is clean and clear of tools and miscellaneous items of equipment after maintenance.*

4.1. Maintenance Instructions

4.1.1. Preventative Maintenance

Inspect the Display for defects before each operation. Do a visual check for the following:

- Damaged or dirty Lens
- Loose Cables
- Defective LEDs

4.1.2. Cleaning the Display

Routine cleaning of the Display Board is at the discretion of the operator and subject to local conditions. Use damp non-abrasive materials such as a sponge, or lint-free cloth and a soft detergent (washing-up liquid) to clean the Display. Remove difficult stains or marks with a suitable solvent. **DO NOT USE** sharp or metal objects.

4.1.3. Corrective Maintenance

To do maintenance tasks, unscrew the screws at the side of the Display and remove the Side Profile. Remove the Lens carefully and put in a safe place.

Replacing a defective Display Panel:

1. Unscrew the attaching screws and disconnect all relevant wiring
2. Replace the Display Panel and connect all wiring.

Replacing a defective Logic Board:

1. Unscrew the attaching nuts and disconnect all relevant wiring
2. Replace the Logic Board and connect all wiring.

Carefully slide the Lens back on the Display and attach the Side Profile. Clean the Display with a damp cloth and make sure the unit is watertight after all maintenance.

Replacing a defective Fuse:

1. Use a flat-head screwdriver to open the Fuse holder on the Display
2. Replace the Fuse
3. Close the Fuse Holder.

4.1.4. Special Measures following a Stoppage

If the Display is out of service for a long period of time, carefully remove the Display and store it in a cool dry place.

4.2. Handling Equipment

- One working platform
- Standard tool kit

4.3. Special Tools

There are no special tools required.

5. Product Specifications

CHARACTERISTIC	VALUE
Display Features	
Display Type	Safety Display Board
Model	DB-Prod070505-HBR
No. of Lines per Board	7
No. of Characters per Line	5
Character Height	50mm
LED Colour	High Bright Red
Communication	
EPROM	COCA COLA
Protocol	DB Win
Baud Rate	9600
Data Format	8 bit, 1 stop bit, no parity
Character Set	Extended ASCII set
Electrical	
Power	220V AC
Power Consumption	55W
Fuse Value	10 Amp
Housing	
Dimensions (LxHxD)	1000mm x 980mm x 75mm
Housing	Aluminium, Black
Front Screen	5mm Grey, Polycarbonate
Environmental Conditions	
Temperature Range	-5°C to 65°C
Humidity Range	5% to 80% without condensation

Table 2 - Product Specifications.