

# Brookhaven FD

## Graphics Board Display

### User Manual

#### *Title Page*

© 2011 Data Display Ltd

No part of this document may be reproduced by any process without the prior written permission from Data Display Ltd.

The information in this document is provided for reference only. While every effort has been made to make sure it is accurate and complete, Data Display Ltd does not accept any liability arising out of the application or use of the information or products described herein. Moreover, Data Display Ltd reserves the right to alter specifications or procedures without notice.

This document may contain or refer to information or products protected by copyright or patents and does not convey any license under the patent rights of Data Display Ltd nor the rights of others.  
All products referred herein are trademarks of their respective owners.

#### **Publication details:**

*Title:* Graphics Board Display User Manual

*Issue:* 1

*Issue Date:* 3-4-11

*Part Number:* DDJ15862001

*P. O. Number:* 6704

#### **Produced by:**

Product Support Department  
Data Display Ltd  
Deerpark Industrial Estate  
Ennistymon, Co. Clare  
Ireland

## Table of Contents

<b>1</b>	<b>Introduction</b> .....	<b>3</b>
1.1	Scope.....	3
1.2	Purpose.....	3
1.3	System.....	3
<b>2</b>	<b>Hardware</b> .....	<b>4</b>
2.1	Unpacking.....	4
2.2	Installation.....	4
<b>3</b>	<b>Software</b> .....	<b>5</b>
3.1	System Requirements.....	5
3.2	Conventions used in this Manual.....	5
3.3	Installation.....	6
3.4	Comms Selection.....	7
3.5	Pin Connections for RS232.....	7
<b>4</b>	<b>GRAFIT 1.18β Software ©</b> .....	<b>8</b>
4.1	Getting Started.....	8
4.2	Exiting from the Software.....	8
4.3	Accessing Help.....	8
4.4	Screen Layout and Symbols.....	9
4.4.1	<i>The Caption Bar</i> .....	9
4.4.2	<i>The Speed Bar</i> .....	10
4.4.3	<i>The Menu Bar</i> .....	10
4.4.4	<i>The Canvas</i> .....	10
4.4.5	<i>The Status Line</i> .....	10
4.5	The Menu Bar.....	11
<b>5</b>	<b>Examples</b> .....	<b>31</b>
5.1	How to Setup a Graphics Frame.....	31
5.2	How to create a simple animation with effects.....	31
5.3	Adding text to a Graphics frame.....	31
5.4	Displaying the Date, Time or Temperature.....	32
5.5	Notes on importing Clipart.....	33
<b>6</b>	<b>Trouble Shooting</b> .....	<b>34</b>
6.1	Software.....	34
6.2	Hardware.....	34
<b>7</b>	<b>Effects</b> .....	<b>35</b>
7.1	ON/OFF Effects.....	35
7.2	Character Fonts.....	36
<b>8</b>	<b>Maintenance</b> .....	<b>36</b>
8.1	Maintenance Instructions.....	36
8.1.1	<i>Cleaning the Display</i> .....	36
8.1.2	<i>Preventative Maintenance</i> .....	36
8.2	Technical Support.....	36
<b>9</b>	<b>Specifications</b> .....	<b>37</b>

# 1 Introduction

## 1.1 Scope

The scope of this document covers the back to back Graphics Board Display, Master and Slave for the Brookhaven Fire Department Display project.

## 1.2 Purpose

The purpose of the document is to provide the relevant information to enable the user to operate and maintain the Display Board correctly.

## 1.3 System

The Display system comprises of a back to back Graphics Display Board and the GRAFIT graphics software package. The Display is 40 pixels high by 96 pixels wide and uses ultra-bright red LED technology. The housing is fabricated from aluminium extrusion and has a black powder coat finish.

The Display consists of two units, Master and Slave. At installation, the Serial / Temp cable from the Master, Unit 1 must be connected to the Slave, Unit 2.

The Displays are controlled from a host PC using the GRAFIT graphics software over a wireless network using radio modems. Users can create and edit both text and graphic messages. The Display Board can show a combination of static and scrolling messages, normal, large, and/or specialized fonts as well as various ON/OFF effects such as Flash, Jump, Wipe Sparkle etc.

**Warning**

**Only trained and authorised personnel should do tests and maintenance on this Display Board System.**

## 2 Hardware

### 2.1 Unpacking

Carefully remove the items from their package and store the packaging safely. After unpacking, inspect the contents for any damage that may have occurred during shipment. In the event of damage, refer to the '*Technical Support*' section of this manual.

### 2.2 Installation

The Display consists of two units, Master and Slave. At installation, the Serial / Temp cable from the Master, Unit 1 must be connected to the Slave, Unit 2.

Mount the Board securely and connect the cables as shown in the Figure below.

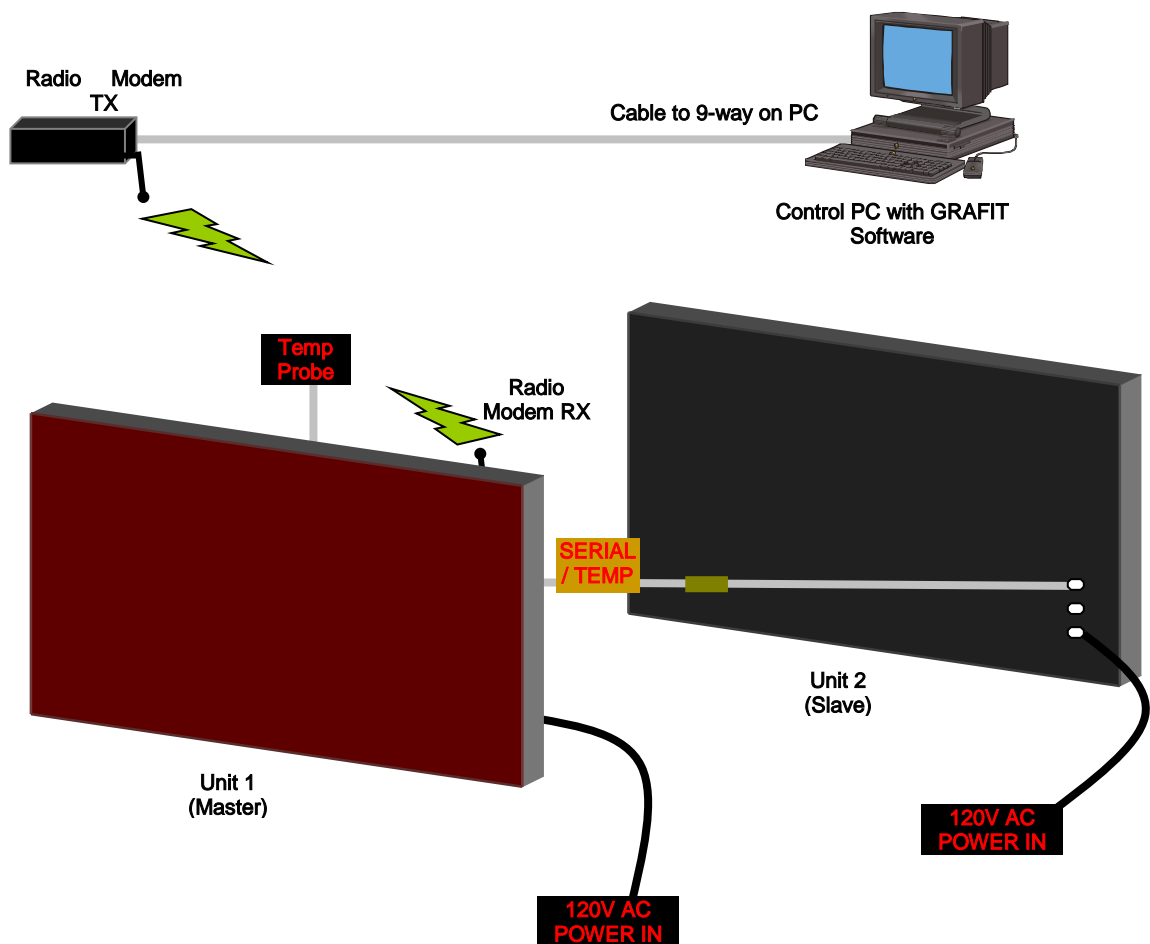


Figure 2.1 – System Configuration.

## 3 Software

The Display Boards are operated using the text and graphic based GRAFIT software package. The user can edit general text messages, time and date messages as well as draw and create their own single frame graphics or multi-frame sequences and animations.

This chapter contains information to enable the installation and configuration of the software.

### 3.1 System Requirements

It is assumed that the reader is familiar with the use of an IBM PC or compatible computer and with the basic Microsoft Windows terminology. It is also recommended that the user is familiar with Microsoft Paintbrush to better edit graphic frames for the display.

The minimum hardware and software requirements to run the *GRAFIT* software are as follows:

Processor:	Pentium 1 or higher
Memory:	<b>16MB</b>
Display:	VGA (15 inch or larger recommended), 256 colors, 16-bit color
Software:	Microsoft Windows 95 or later
Disk Space:	10MB minimum free space for <i>GRAFIT</i> plus space for database and event log storage. ( Bitmaps, Gifs, Tiffs, etc.)
Comms	COMM Port 1, 9 Pin serial port must be available.
Other:	Mouse or other pointing device. Since the Display system is normally connected to COM1 is important to ensure that there is no conflict with the mouse or other pointing device.

### 3.2 Conventions used in this Manual

#### Menu Commands

This manual uses a shorthand method when referring to a series of menu commands e.g. 'Choose the About option from the Help menu' is shown as *Help>About*.

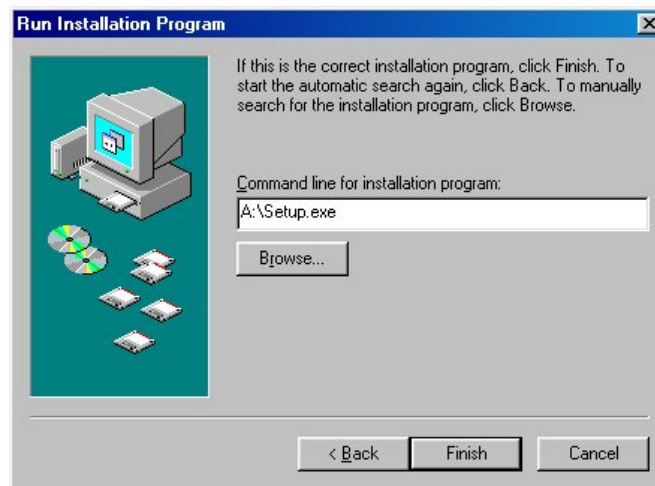
#### Clicking the Mouse buttons

The term 'Click' denotes clicking the left mouse button.

### 3.3 Installation

The GRAFIT software package is supplied on floppy disk. To install the software, do the following steps:

1. Insert the GRAFIT Software Disk into your floppy drive.
2. Click the **Start** button, then select **Settings|Control Panel**.
3. Double-click the **Add/Remove Programs** icon and follow the instructions shown on the screen.
4. Click on the **Next >** button to begin the installation and follow the on-screen instructions.
5. When the process is complete, all files are stored in the C:\GRAFIT folder unless the destination folder has been changed.



*Figure 3.2 – Installation Screen.*

Add GRAFIT to the Start menu or your Desktop by creating a short-cut as described in your Windows User Manual. The executable file to run the software package is as follows:

*GRAFIT Version 1.18β = C:\GRAFIT\GRAFIT.EXE*

### 3.4 Comms Selection

While the Display is primarily controlled remotely over a network using the Modem installed in the Control Box, it may also be controlled directly from a local PC or Laptop via RS232.

To control the Display locally using a Laptop with the GRAFIT software, a 3 core, RS232 cable will be required with a 9-way or 25-way D Type connector at one end to connect to the COM Port 1 on the Laptop. For Pin Connections, refer to section 3.5.

The COMMs Port configuration on the GRAFIT software will also need to be changed. To reconfigure the COMMs port setting from Modem to RS232, do the following steps:

1. Run the GRAFIT software package.
2. Select **Options/Display**.
3. Click on the COMs button and click on the MODEM button.
4. Remove the phone number from the Number field in the Modem Options dialog box.
5. Click on the OK buttons to exit.

To revert back to Modem operation, do steps 1 to 3 as above and enter the telephone number in the Number field in the Modem Options dialog box. Click on the OK buttons to exit.

### 3.5 Pin Connections for RS232

When wiring the serial cable of the display to a IBM Compatible computer connect the wires to the PC as follows:

9-way (DB9) port	
Pin	Function
2	Serial In (White)
3	Serial Out (Red)
5	Ground( Black)

25-way (DB25) port	
Pin	Function
2	Serial In
3	Serial Out
7	Ground

## 4 GRAFIT 1.18 $\beta$ Software ©

### 4.1 *Getting Started*

To start GRAFIT, select *'Start/Programs/Shortcut'* to GRAFIT.EXE.

### 4.2 *Exiting from the Software*

There are three ways to exit from the software:

1. Use the normal menu command. Click on *'Frame/Exit'* and click on the 'Yes' button of the dialog box.
2. Click on the Close button in the top right-hand corner of the screen, and click on the 'Yes' button of the dialog box.
3. Press the ALT and F4 keys together, and click on the 'Yes' button of the dialog box.

### 4.3 *Accessing Help*

Help is available in the GRAFIT application and may be accessed in the following ways:

- By reading the status bar at the bottom of the screen when a menu option is highlighted.
- Select *Help/Help* or *Help/About*.
- Press F1 to view context sensitive help for the menu option selected.
- Most dialog boxes have HELP buttons.



## 4.4 Screen Layout and Symbols

This section gives details of the Graphic User Interface (GUI) for the GRAFIT application. The components of the GUI are the Caption Bar, the Speed Bar, the Menu Bar, the Canvas (the main area of the window) and the Status Line at the bottom of the screen. When selected, many of the main menu items open Dialog Boxes.

Note: For single color Displays, red is used as the default color.

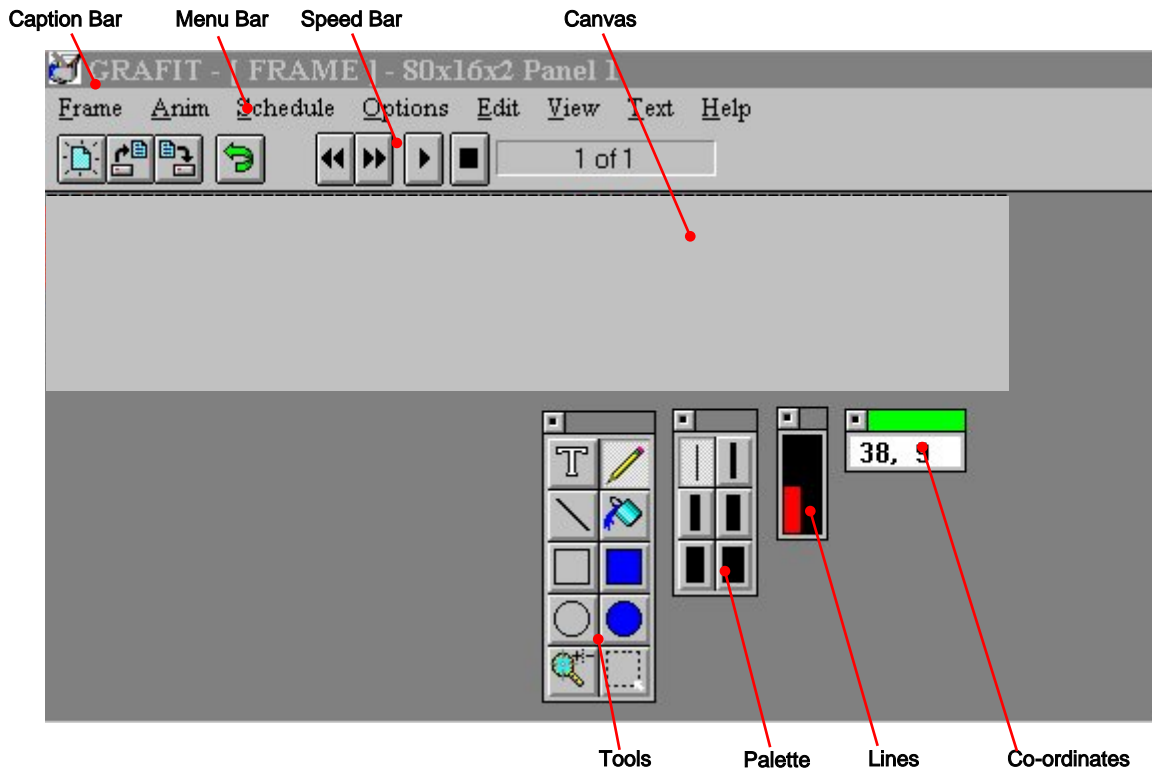


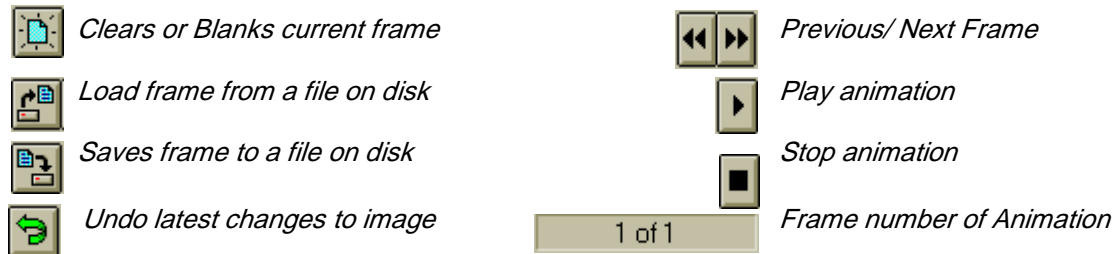
Figure 4.1 - The Main GRAFIT User Interface.

### 4.4.1 The Caption Bar

The Caption Bar contains the name of the software application GRAFIT followed by the current view title and the resolution.

#### 4.4.2 The Speed Bar

The Speed Bar consists of five buttons that are used to directly access Frame Menu options.



#### 4.4.3 The Menu Bar

The Menu Bar is the primary means of accessing all the menu commands and should always be kept visible. If a menu command is followed by an ellipsis (...), choosing the command opens a dialog box. If the command is followed by an arrowhead (▸) the command leads to another menu selection. If the command has neither an ellipsis nor an arrowhead, then the action occurs as the command is chosen or. For further information on the use of windows, icons, mouse and menus refer to the Microsoft Windows User Manual.

#### 4.4.4 The Canvas

The Map is the main central area of the 'application' window. Using the commands from the menus, the user is able to create text/ graphics frames on the Canvas.

#### 4.4.5 The Status Line

The status line appears at the bottom of the main window. It shows useful information as well as brief explanations of menu items.

## 4.5 The Menu Bar

<b>Frame</b>
<i>C</i> lear
<i>D</i> elete
<i>I</i> nsert
<i>L</i> oad

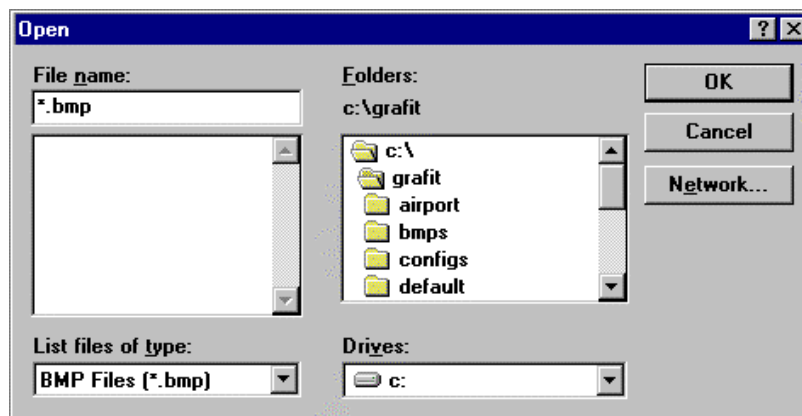
This menu provides options for dealing with single bitmaps only. Only the working frame is effected using options in this menu.

Blanks/clears the current frame.

This option allows you to delete any frame from the frame list/sequence provided that there are two or more frames in the sequence.

This option is like the 'Frame/Load' except that the frame loaded is inserted into the frame list after the current frame, provided that there is frame space left in which to store it. This allows you to insert a frame into a sequence.

Selecting 'Load' under the 'Frame' menu produces a dialog box from which the user may select any of the file types listed. For example *.bmp*, *.gif*, *.pcx*, *.tga* or *.tif*.



### FIELDS

#### **File Name:**

To select a file, click on a '.BMP' file listed under 'File Name' in the dialog box or type in the name of the required '.BMP' file in the space given under 'File Name'.

#### **List Files of Type:**

Clicking on this option with the left mouse button pulls down a menu from which the user may choose what type of files he wishes to see in the 'File Name' selection menu.

#### **Folders:**

Option to select the subdirectories from which the user is able to view the files contained in the subdirectory under the field 'File Name'.

#### **Drives:**

Lists local Drives where images may be stored.

### BUTTONS

#### **OK**

Accept configuration as entered and load file.

Load  
continued...

**BUTTONS**

**CANCEL**

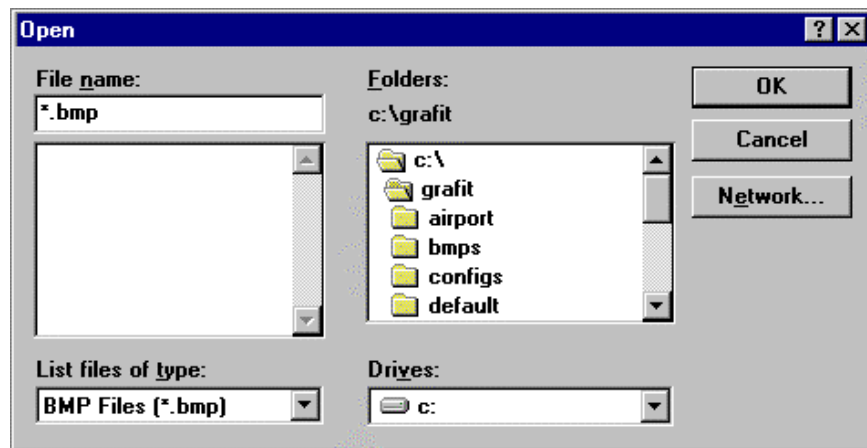
Exit dialog without loading file.

**NETWORK**

Lists networked Drives where images may be stored.

Save

This option 'Save' under 'Frame' provides the facility to save any changes to the bitmap or system, e.g. pause rate, of this application as a '.BMP' file. A '.BMP' file is a single bitmap.

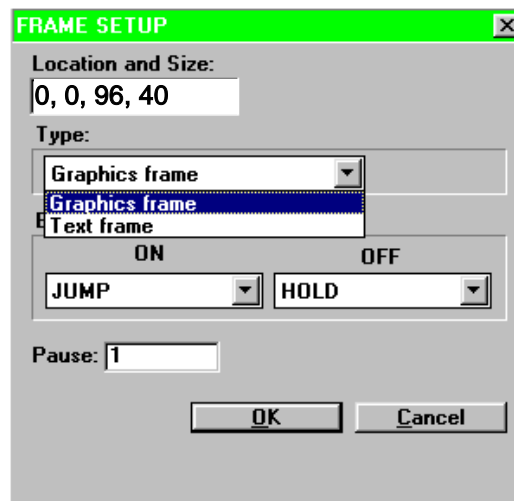


Send

Send the current frame to the Display hardware as a single frame sequence.

Setup

Selecting this option provides a dialog box so that the user may select a frame type, an effect for the current bitmap frame being worked on and a pause rate i.e. how long the bitmap frame drawing will be left on the screen during animation.



**FIELDS**

**Type:**

Click on the arrow to show the frame type options available, Graphic frame or Text frame. When creating or editing the animation, a sequence of Graphic or Text frames may be inserted in the animation.

**Setup**  
*continued ...*

**Effect:**

Clicking with the left mouse button on this field pulls down a menu from which the user can select an effect for the bitmap frame being worked on. The ON effect is how the frame is drawn onto the Display page and the OFF effect is how the frame is drawn off the Display page.

**Pause:**

As yet the pause length of time is variable and depends on the size of the Display. To define a pause rate click the left mouse button in the space to the right of 'pause' and type in your required value. (For the 112 x 24 Display a pause of 20 is equal to approx 1.0 second)

**BUTTONS**

**OK**

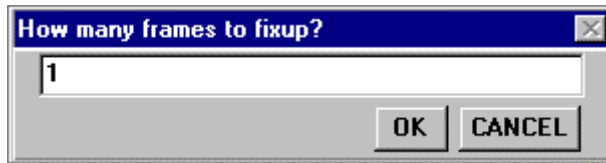
Accept configuration as entered.

**CANCEL**

Exit dialog without altering bitmap effect or pause file.

**Fixup Colors**

This option converts images to match the palette of the Display being used. The result will depend on how much color information is lost in the process. This option is limited to a 4 color Display.



**Exit**

This option is used to exit GRAFIT and a dialog box appears to give the user the choice to stop the exit procedure.



**BUTTONS**

**YES**

Exit GRAFIT.

**NO**

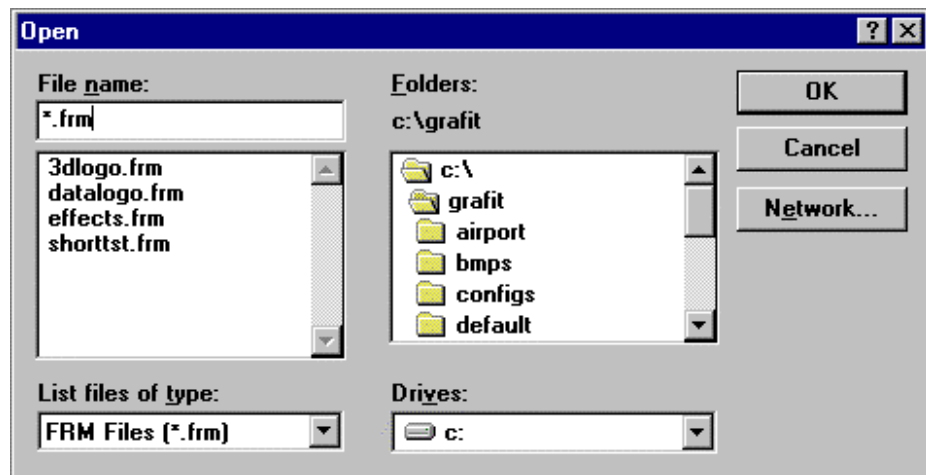
Do not exit GRAFIT.

**AAnim****Clear****Load**

This menu provides options for dealing with animations or sequences of frames. All working frames are effected using options in this menu. An 'Animation' is a group of saved frames (\*.frm).

Blanks/clears the all frames.

Selecting 'Load' under the 'Anim' menu opens a dialog box from which the user may select a ".FRM" file only. A ".FRM" file is a sequence of frames.

**FIELDS****File Name:**

To select a file, click with the left mouse button on a '.FRM' file listed under 'File Name' in the dialog box or type in the name of the required '.FRM' file in the space given under 'File Name'.

**List Files of Type:**

Clicking on this option with the left mouse button pulls down a menu from which the user may choose what type of files he wishes to see in the 'File Name' selection menu.

**Directories:**

Under this heading is provided an option to select the subdirectories from which the user will be able to view the files contained in the subdirectory under the field 'File Name'.

**Drives:**

When clicked on with the left mouse button this field produces a pull down menu from which the user may select their drives by clicking with the left mouse button on the required drive.

**BUTTONS****OK**

Accept configuration as entered and load file.

**CANCEL**

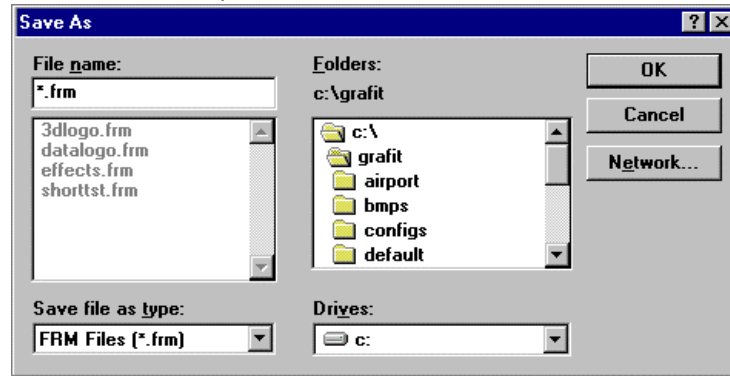
Exit dialog without loading file.

**Join**

This option works like load except the loaded animation/frame sequence is joined at the current frame.

**Save**

This option 'Save' under 'Anim' provides the facility to save any changes to the of sequence of bitmaps or the system e.g. pause rate, of this application as a '.FRM' file. A '.FRM' file is a sequence of frames.



**Send**

Send animation sequence to attached Display hardware.

**Setup**

Selecting this option provides a dialog box, which enables the user to define Display specific animation parameters.

**FIELDS**

Frames:

The number of pages or picture frames in the animation.

Pause:

The 'pause' allows the user to set the same delay between all frames in the animation sequence. To define a pause click the left mouse button in the space to the right of 'Pause' and type in your required value.

**BUTTONS**

**OK**

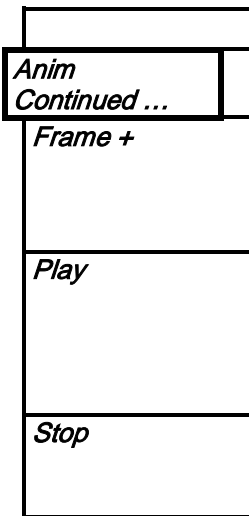
Accept configuration as entered.

**CANCEL**

Exit dialog without altering bitmap effect or pause file.

**Frame -**

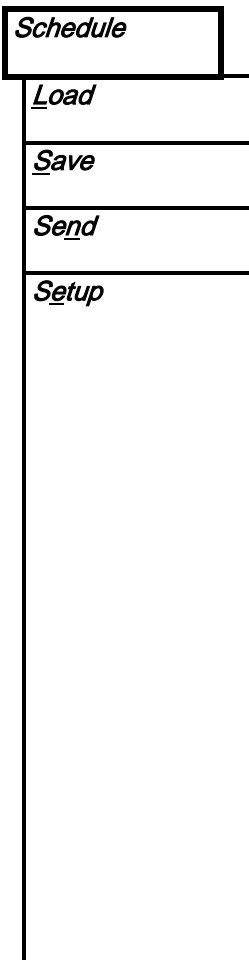
Clicking with the left mouse button on 'Frame-' replaces the current bitmap frame with the previous bitmap frame for viewing. This option is also available as the fifth button on the speed bar.



Clicking with the left mouse button on 'Frame +' replaces the current bitmap frame with the following bitmap frame for viewing. This option is also available as the sixth button on the speed bar.

Clicking with the left mouse button on 'Play' will show each frame, of the '.FRM' file, in sequence one after the other at a rate depending on the delay until the user chooses to stop. This option is also available as the seventh button on the speed bar.

Clicking with the left mouse button on 'Stop' will stop the animation. This option is also available as the eighth button on the speed bar.



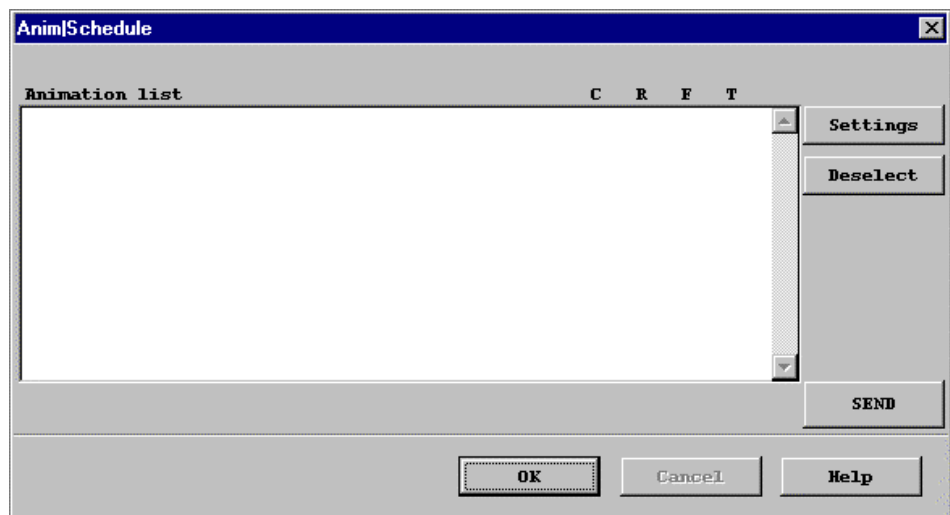
This menu provides options for dealing with schedules of animation sequences.

Load a schedule setup from a .SCH file on disk into memory.

Save a schedule setup to a .SCH file on disk.

Send the current schedule setup to the Display.

Popup the Schedule setup dialog that provides an interface with which you can create and edit an animation schedule.





**Schedule  
Continued ...**

**Setup  
Continued ...**

## **FIELDS**

Animation list:

This is a complete list of the animation sequence or .FRM files in the schedule. On each line in the list you have the path and filename of the animation followed by four parameters as follows:

**C** = Which cycles the animation is to appear in, all cycles or every second or third cycle or whatever.

**R** = How many times will the animation be repeated in a cycle.

**F** = How many frames in the animation sequence.

**T** = Is the animation sequence timed or not.

To add a file to the list you right click on the position in the list where you wish to insert or append the file and a file selection dialog will popup from which you can search for and select the file.

## **BUTTONS**

### **SETTINGS**

This button pops up the Animation Settings dialog for the selected file in the list. You select a file in the 'Animation list' by left clicking on it. This dialog allows you to set the following parameters:

**Cycle:** Which cycles the animation is to appear in, all cycles or every second or third cycle or whatever.

**Repeat:** How many times will the animation be repeated consecutively in a cycle.

**Time:** A time in standard 24hr format (e.g. 12 O' Clock midnight is '00:00').

**Date:** A date entered in the following format 'DD/MM'.

If a field is left blank it is ignored or considered as a "don't care" or valid always.

### **DESELECT**

This button allows you to delete a selected file from the 'Animation list'.

### **SEND**

This button tells the software to send the animations to the Display and close the dialog.

### **OK**

Accept the schedule and close the dialog.

### **CANCEL**

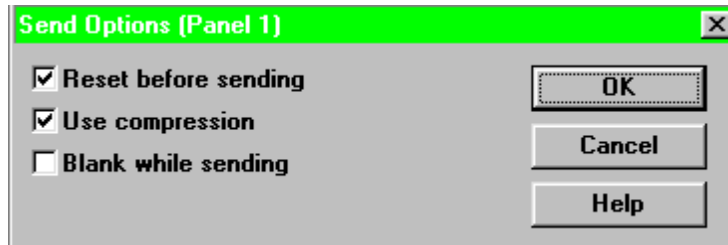
Ignore any changes to the schedule and close the dial

**Options**

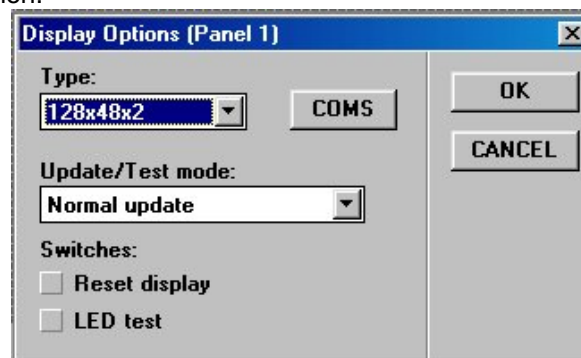
This menu provides Display specific options.

**Send**

This menu option is used to confirm the transmission settings. The '*Reset before sending*' and the '*Use compression*' settings **must always** be checked.

**Display**

This menu option opens the Display setup dialog, which is used to select what type of Display you are connected to and the communications parameters associated with this connection.

**FIELDS****Type:**

This is a drop down list of available Display types. Each Display type is listed using its standard name, its' dimensions or a combination of the two. The dimensions are of the form W x H x C (where W = LED columns, H = LED rows, C = colors including LED off).

**Update/Test mode:**

This is a drop down list of the modes available on the chosen type of Display. The modes available are as follows:

**Normal update**

Default mode whereby the Display just runs as usual.

**Device test page**

This mode forces the Display to show device information such as the firmware version, communications settings, RAM free etc. This is useful if you want to check Displays' settings without opening it up or powering it down.

**Character set page**

This mode tells the Display to step through its' character set/fonts page by page.

**LED test page**

This mode tells the Display to switch to its LED test page(s), designed to help locate defective LEDs.

**Demo page**

This mode sends a demonstration sequence to the Display.

**Options|Display  
Continued ...**

Switches: This is a list of software switch settings as follows:

Reset Display

Set update/test mode back to normal and clear down all the memory in the Display. Some Displays will then show the time on the bottom line until the next time information is sent to them.

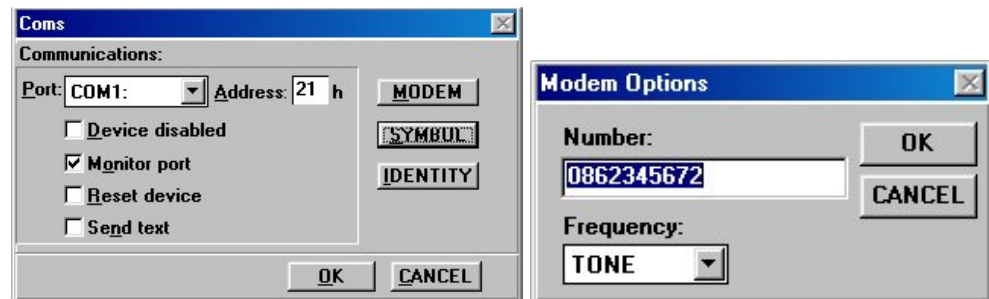
LED Test

When selected, the Display runs an OFF/ON test pattern to test the LEDS.

BUTTONS

COMS

This button pops up a communications setup dialog. With this you can setup the Displays EPROM address as well as its SYMBOL, IDENTITY or MODEM options. Enter the phone number in the Number field with no spaces.



**Display List**

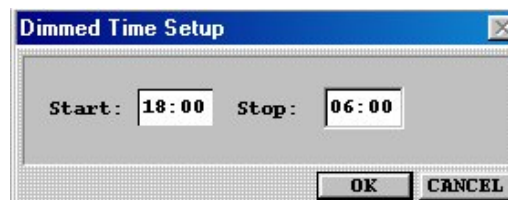
This dialog allows you to add extra Graphics Display Panels. When you add a Panel then you must also choose the Options|Display|COMs button and set its' address. To switch to/select a Panel, select the Options|Display List menu option and click on the Panel in question.

**Set Time/Date...**

This menu option sends the current PC time/ date to the Display(s) at the next initial Frame/ Anim. This is useful if wanting to schedule frames as well as displaying Time and/or Date.

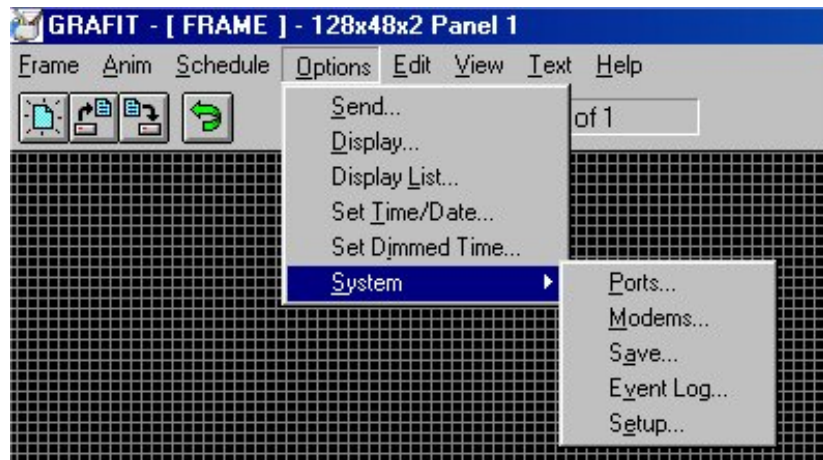
**Set Dimmed  
Time...**

This menu option gives the user the option to set a specific time period for the display to go to half its brightness level. When selected, a window displaying Start/ Stop for dimming to occur. It must be typed in 24 hr. format. An example is NOON equals 12:00, where as Midnight equals 00:00. Note: To update the TIME and DIM TIMED, a valid START and STOP time must be entered in the DIM TIME menu option dialog box.



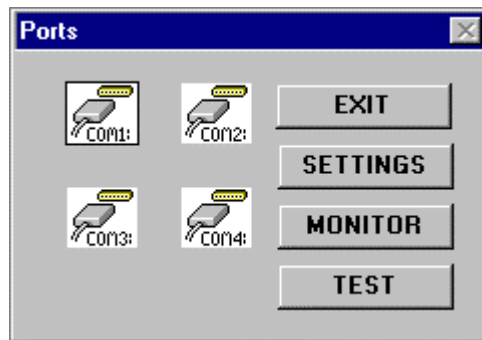
**System**

This menu provides options for changing system settings such as communications parameters, modem setup, Display settings etc.



**Ports**

This dialog provides facilities for setting up, testing and monitoring the system communications ports. For this software package, the settings of COM1 must be set as shown below and be available on the Host PC.



**BUTTONS**

**EXIT**  
Exit this dialog.

**SETTINGS**  
This button pops up a port settings dialog from which you can select the baud rate, data bits, parity, stop bits, flow control, state (open / closed), RTS status (high/low) and the Rx. timeout and poll rate in milliseconds.

Options/System/  
Ports  
Continued ...

Settings for COM1:

Baud Rate: 9600

Data Bits: 8

Parity: None

Stop Bits: 1

Flow Control: None

State: Open

OK

CANCEL

INFO

RTS: Disabled

Rx. timeout:(ms) 5950

Poll rate:(ms) 60000

Wait states:(ms) 100

#### MONITOR

Popup a monitor dialog for the selected port. This is a floating dialog, which provides a means of viewing bytes at the port in HEX, ASCII or a combination of both. This dialog is only intended for use during initial system tests or for demonstration purposes. It should not be used for prolonged periods as it slows up the system and at the moment may sometimes have strange side effects e.g. if you print while this dialog is open sections of program memory can become corrupt (these problems are under investigation).

#### TEST

Popup a string input dialog, which you can use to send out a particular sequence of bytes to the selected port. (You can send binary values as follows: ^A=1, ^B=2 etc)

#### FIELDS

##### Rx. timeout:

This is the length of time the software will wait for device responses after polling /sending on this port. If this value is greater than 2000ms for the GRAFIT application then the software will popup an information dialog for each frame sent when sending one or more frames to a Display.

##### Poll rate:

This is the minimum time between each poll loop on this port. A poll loop is when the software polls all devices on the system. There are several types of poll and the type will depend on the state of the particular device. The devices are polled one by one and then the software waits for any devices that are expected to respond to send back the appropriate response. The length of time it waits is defined above. The time between the polling of each device is a minimum of 55ms but this can be increased in multiples of 55ms by setting the number of wait states between polls. This is necessary in situations where a device is using Tx. enable to gain control of the transmission line in an RS485 network.

*Options/System/  
Ports  
Continued ...*

Wait states:

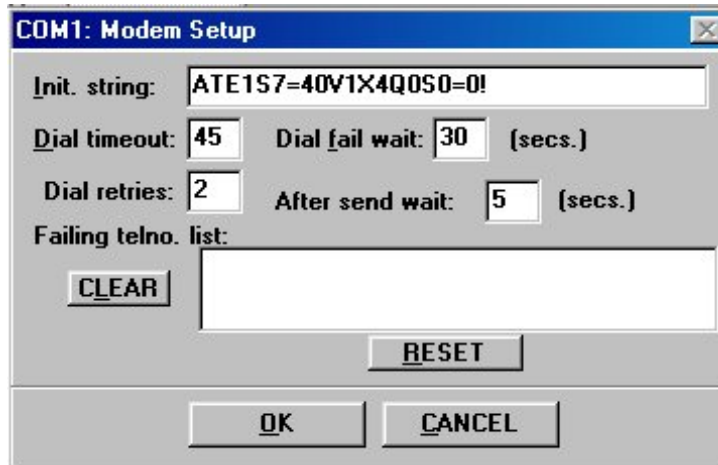
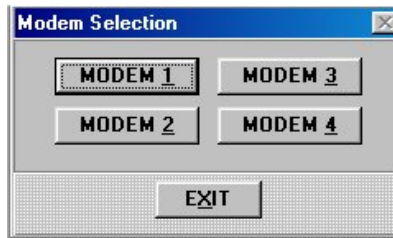
The number of wait states between each consecutive poll during a poll loop.

ICONS

Each of the icons represents a COMn: port. To select a port you just click on its' icon. A port is selected if its' icon has a black rectangular border and you can only select one port at a time.

*Options/System/  
Modems*

This option allows the user to edit the Modem setup parameters.



*Save*

This option provides the facility to save any changes to the configuration or system of this application.

*Event Log*

This option provides a dialog box to show the event log day by day. By entering a particular date, the first 1000 events occurring on that day will be listed. To close the dialog box, click on EXIT. Click on PRINT to print the listed events or HELP for further information.



*Setup ...*

This option is provided for system developers only. It is used for configuring system specific settings. As would be expected it is password protected to prevent unqualified users from tampering with crucial system settings. The options listed here vary from system to system.



*Edit*

This menu provides the option for altering complete bitmaps or sections of bitmaps selected with the grab-tool

*Undo*

This option allows the user erase his last action on the bitmap. If 'Undo' is clicked a second time, the result is that what was undone will be unerased.

*Cut*

Cut the frame or selected section to the Clipboard.

*Copy*

Copy the selected frame or selection of it to the Clipboard.

*Paste*

Put copied frame/selection onto current frame and allow the user to position it.

*Clear All*

Not available for this application.

*Delete*

Not available for this application.



View

Tools

This menu provides the tools for altering bitmap contents.

Clicking on this option produces a tool bar on the screen. The tool bar has a caption and ten tool icons on it and a close gadget.



The caption or horizontal bar on top of the tool bar is used to position the bar anywhere on the screen by pressing down on the left mouse button and move the mouse to the required position of the tool bar before releasing the left mouse button.

The button immediately adjacent and to the left of the caption is the close gadget and it will close the tool bar and remove it from the screen when clicked on with the left mouse button.

The ten icon buttons beneath the tool bar caption function as follows:

Note: Upon clicking each button on the tool bar the mouse arrow will take the form of the icon on the button clicked.



**TEXT**

The text button allows the user to type in text onto their drawing. To alter the size of the font choose the fonts option in the main menu, see 'FONTS' or 'Text|Fonts...'

To type text on the drawing frame left click on the frame in the region onto which you want the text to appear. A text cursor will then appear in the foreground color. Next type the first character of the text if the character does not appear where you want it to then delete it (with the backspace key) and reposition the cursor. By referring to the Co-ordinates box you will soon be able to position the text cursor exactly where you want it whenever you are entering text. When you are happy with the text and its position you must fix it onto the frame image by left clicking anywhere on the frame.

If you want more control when placing text on a frame proceed as follow: with the text cursor selected right click on the frame to popup the text setup dialog. Enter your text in the box provided and then click on OK. Now the text mouse pointer has the text you entered attached to it as a floating object. As you move the mouse pointer over the frame the text will follow without affecting the image underneath. Once you are happy with the text position then you can left click at that position to drop the text onto the frame. At this point you can still edit/reposition the text by right clicking on the frame to popup the text setup dialog again. When you drop text on the frame by left clicking you must left click again to fix the text otherwise the text is still selected and will be lost if you switch to another operation.

View  
continued ...Tools  
continued ...**PEN**

By clicking on the pencil icon button this allows the user to draw freehand. The user must press down on the mouse button to draw with the mouse. On release of the mouse button the mouse arrow will cease to act as a pencil. To continue the line or add another one press down on the mouse button again and draw as before.

**LINE**

The line icon when clicked on enables the user to draw a straight line from the point where the user chooses to click the mouse button to where the user releases the mouse button.


**FILL**

The spilling bucket of paint icon is used in conjunction with the 'Palette'. With this tool chosen you can fill a bounded area on the frame with the chosen color in the palette simply by clicking within the area on the frame.


**RECTANGLE**

This square tool allows the user to draw 'outlines' of squares or rectangles. Click down on the mouse button on the frame when the mouse is at the required start position and then drag the mouse, which has the effect of extending the diagonal of the square until it is of the required size. Releasing the mouse button fixes the shape into position. The operation must be completed once started.


**FILLED RECTANGLE**

Same as  except that the inside of the square is filled with the background color (see palette).

**ELLIPSE**

Same as  except that the square is a circle.

**FILLED ELLIPSE**


Same as  except that the square is a circle and the inside of the circle is colored.

*View  
continued ...*

*Tools  
continued ...*

Note:

- There is no erase facility with this package. A suggested method of erasing would

be to use tool  with the same color as the background of the frame and

draw over the error.

- For drawing tools, if you click with the left mouse button the foreground color is used to draw and if you click with the right mouse button the background color is used to draw.



### ZOOM

The magnifying glass icon tool gives one the ability to zoom in or out on a frame simply by clicking on the frame with the left or right mouse button. You left click on the frame to zoom in and you right click on the frame to zoom out.



### GRAB/SIZE

This tool changes the cursor to an arrow pointing to the north west. With this tool you can select a rectangular section of a frame and copy it to another section of the frame or you can change the size and position of the drawing area on the frame (which is the whole frame by default).

To grab and copy a section of a frame over another section of a frame, select this tool then mark a rectangle on the frame as if you were drawing a rectangle with the left mouse button. Then drag this rectangle over the area to which you wish to copy it by clicking on the rectangle with the left mouse button and moving the mouse arrow as you keep the left mouse button down.

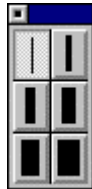
To change the size and position of the drawing area on the frame with the Grab/Size tool selected, right click on the frame to switch to size mode. The frame will automatically reset itself to the full size and the grid color will change to CYAN to remind you that you are in SIZE mode. You can right click again to switch back to GRAB mode. While in SIZE mode you can resize and position the drawing area of the frame by first of all marking the rectangle as if you were about to grab a section of the frame (see previous paragraph) and then dragging this section to the position you want (see previous paragraph). As soon as you drop the section after dragging it the grid will resize itself and its' color will change back to GRAY. If you do not want to reposition the grabbed section then you can drop it where it is by left clicking on its' top left corner.

The SIZE operation is very useful if you want to use a frame to change only a small area of the Display in a sequence of frames.

**View continued ...**

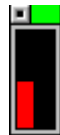
*Lines*

Clicking on this option produces a lines bar on the screen. The lines bar allows you to choose the thickness of line for a line drawing operation.



*Palette*

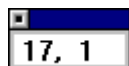
Clicking on this option produces a palette bar on the screen. This bar has one button icon for each color available and two rectangles one inside the other to represent the selected background and foreground colors. The outer rectangle represents the selected background (or right mouse button) color and the inner rectangle represents the selected foreground (or left mouse button) color.



Clicking on a color within the color box with the left mouse button will have the effect of changing the foreground color and clicking on a color with the right mouse button will change the background color. Drawing operations will always be performed with the selected color.

*Co-ordinates*

Clicking on this option creates a co-ordinates indicator box which indicates the position of the mouse on the screen in pixels in the format (X, Y). This box can be moved or closed as for the Tool bar above.



**Text**

*Regular*

Not available for this application.

*Bold*

Not available for this application.

*Italic*

Not available for this application.

*Underline*

Not available for this application.

*Outline*

Not available for this application.

*Shadow*

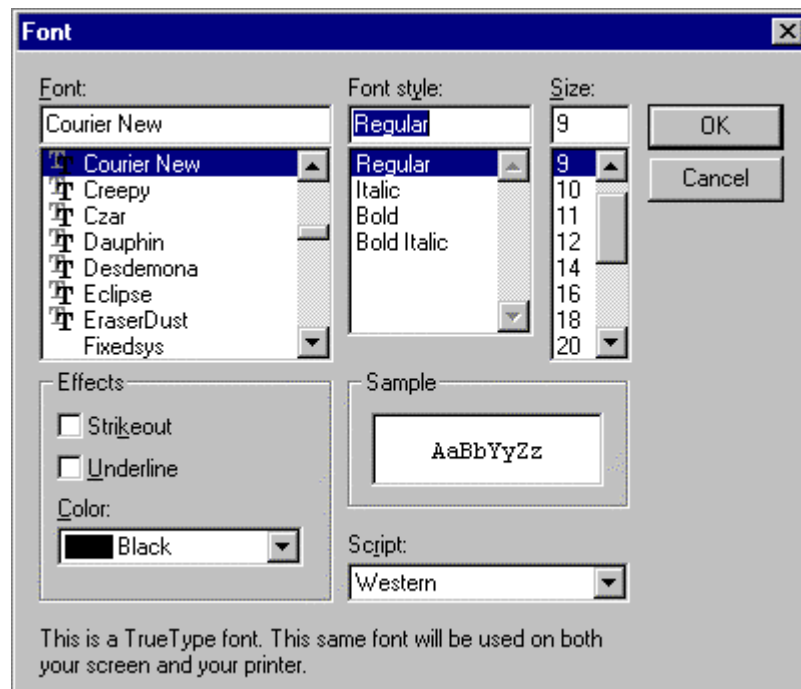
Not available for this application.

**Text**  
continued ...

### Fonts

Available under this option are options to change font, font style and font size and effects.

Upon clicking on this option, the options box will appear and offer the above effects. When selection is completed click on 'OK' to leave options box and change to selected fonts, effects, sizes or types.



### FIELDS

#### Font:

To change font, click on the desired font type beneath the option 'Font' in the box. A sample of the font will appear in the bottom right hand corner of the options box. The scroll up keys, adjacent to the font choice, will give more font options for selection.

#### Font Style:

To change the font style, click on the desired font type beneath the option 'font style' in the box. A sample of the font style will appear in the bottom right hand corner of the options box.

#### Font Size:

To change font size click on the desired font type beneath the option 'font style' in the box. A sample of the font size will appear in the bottom right hand corner of the options box. The scroll up keys, adjacent to the font size choice, will give more font size options for selection.

**Text**  
continued ...

**Fonts**  
continued ...

**Effects:**

An 'underline' and a 'cross out' effect enable the user to write underlined text or write text to appear as if it had a line drawn through the center of it. The effect is selected by clicking on the box along side the required effect to leave a mark in it. An example of how the text will appear in the sample box. To undo the effect click on the box again to clear the mark which selected it.

**Colors:**

The color option for text is not available through the fonts option box. The color can only be altered using the color bar.

**BUTTONS**

**OK** Accept configuration as entered.

**CANCEL** Exit dialog without accepting configuration.

**Help**

This menu contains two options:

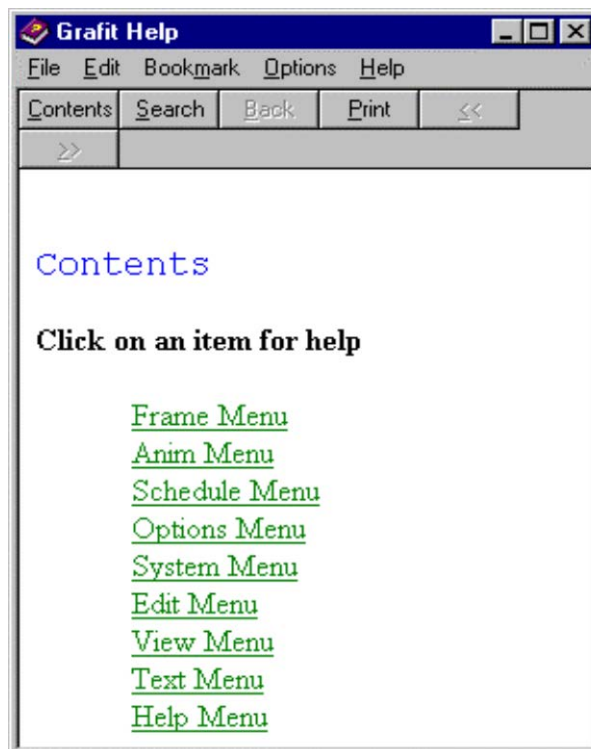
**About**

Pops up a standard application information dialog.

**Contents**

Pops up the help contents.

**Contents**



## 5 Examples


### 5.1 How to Setup a Graphics Frame.

1. With the Options|System|Ports|COMn|Settings menu, setup the Displays' COM port. 1.
2. Connect the host PC to the Display, then power up the Display.
3. The Display shows its communications setting on power up Address, Global Address, Baud rate etc.
4. Choose the 'Type' of Display from the Options|Display|Type menu and click on COMS to set the Displays 'Port' and 'Address', check the 'Reset Display' check box and then click on OK.
5. The Display should flicker and start showing the time centered on the bottom line.
6. Popup the Tools and Palette dialogs with the View menu.
7. Choose the Pen tool from the Tools dialog and the Ink color RED on the Palette dialog.
8. Scribble something on the Frame then choose the Frame|Send menu option.
9. What you just scribbled should appear on the Display. If not, refer to the '*Trouble Shooting*' section of this manual.

### 5.2 How to create a simple animation with effects.

1. Try the steps in 6.1 first to ensure your Display is receiving information without any problems.
2. Animations consist of more than 1 frame. To setup the number of frames choose the Anim|Setup menu option and enter the number of frames you require. Try 3 with a 'Pause' of 10.
3. Now you can create the frames by hand using the Tools and the Palette or load each one from an existing frame file (.BMP, .GIF etc. are supported choose the Frame|Load menu option).
4. For starters just choose the RED Pen and scribble '1' on Frame 1 then click on the Anim|Frame+ menu option or the equivalent speed bar button.
5. Scribble '2' on Frame 2 and repeat the process for Frame 3.
6. Next click on the Anim|Send menu option and wait for the animation to be sent.
7. The Display should now be cycling through the sequence '1, 2, 3' at a rate of 2 frames a second or so.
8. You can now experiment with effects to make your animation more interesting.
9. To change the default JUMP, HOLD effect combination of each frame choose the Frame|Setup option for each frame and change the ON/OFF effect to whatever you like.
10. Example animations are also provided which you can experiment with using the Anim|Load menu option.

### 5.3 Adding text to a Graphics frame

1. Text can be typed onto a graphics frame in two modes, but first you must choose the  tool from the Tool bar.
2. Mode 1: The first mode is got by clicking the start position of your text on the current frame using the Left Mouse Button, when you do this a cursor will appear in the current Font. To change the font choose the Text|Fonts... menu option and setup the font attributes you want choosing from any of the windows fonts available on your system. Now you can enter text at will in the current Ink color.

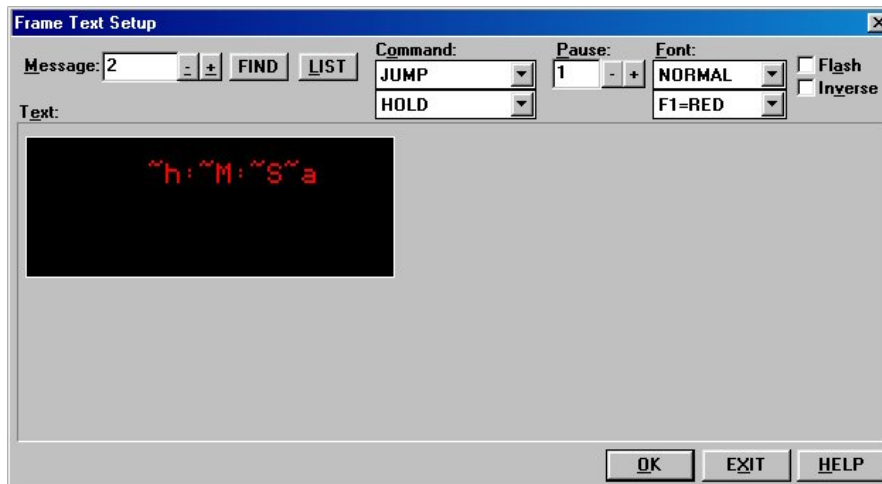
- Mode 2: This mode is got by right clicking anywhere on the current graphics frame to popup the Text Setup Dialog which is a standard text editor with which you can create your text or paste it from the Clipboard in the current Font. Once you have entered your text just click on the OK button and now your text is attached to the mouse pointer as a floating object which you can position exactly over your current graphics image (see help of TEXT tool).

### 5.4 Displaying the Date, Time or Temperature

Use a TEXT frame to display the current time, date or temperature. The time and date is taken from the PC which runs the software so **make sure** that the time and date on the PC is correct. To show the current time, enter the following syntax or combination of:

- ~h =hour
- ~M=minutes
- ~S=seconds
- ~a =am/pm

Note: To show the proper time format, type in a colon (:) after the hour and leave a space between minutes and am/pm. Example: ~h:~m ~a displays 4:18 pm



To show the current date, enter the following syntax:

- ~m =month
- ~d =day of the month
- ~y = year

Note: To show the proper date format, the user must insert a backward slash (/) between the parameters. Example: ~m/~d/~y displays 03/17/03 for March 17<sup>th</sup> of the year 2003.

~H	displays hours in 24 hour format
~h	displays hours in 12 hour format
~a	displays lower case am/pm
~A	displays upper case am/pm
~M	displays minutes
~S	displays seconds
~d	displays day of month
~m	displays month
~y	displays year
~T	displays temperature

Table 5.1 – Abbreviated Time, Date and Temp formats.



## **5.5 Notes on importing Clipart**

Although GRAFIT has all the basic features required to create your own graphics images it usually makes more sense to import your graphics from a public domain Clipart library or some other free source of images. MS Paintbrush, which is installed in most PCs is also an ideal graphics editor for GRAFIT.

## 6 Trouble Shooting

If, after installation and careful completion of the example sessions, communication with a Display is still not possible check the following:

### 6.1 Software

- i) Ensure that the Display type setup matches the actual hardware Display exactly in terms of Type, EPROM address and communications port (COMn:) to which it is connected. Also be sure the parameters used are correct.
- ii) Check the settings for COMn and ensure that its' state is 'Open' and the correct baud rate has been selected.
- iii) Ensure there are no IRQ or other conflicts between the communications ports on your computer system. See your Microsoft-Windows user manual if unsure. This problem is only likely to occur if there is extra hardware on your system such as internal modems or extra/new communications cards. Such problems usually do not appear in DOS since it is not multi-tasking.
- iv) If a serial mouse has ever been used on the computer or the computer is a lap-top with a tracker ball then there is a possibility that there are software drivers loaded which may be conflicting with COMn:.
- v) If you are unsure if a communications port is working or not then check it by running Windows HyperTerminal (see Accessories), select that port then short pins 2 & 3 on the port. Next type something on the keyboard if it does not appear on the Terminal window then there is something wrong with the port either at a setup or hardware level. (This is called a LOOP BACK test!).

### 6.2 Hardware

- i) Ensure the Display unit is powered on. The Display normally shows a message on power up and if it is blank there is a good chance the power is off.
- ii) Ensure that all data/communication cables are correct and secure.
- iii) If checking these items does not locate the problem, there may be a problem with your Windows setup, computers communications port, or some other computer malfunction.
- iv) If not, notify your local Data Display Technical Support.

## 7 Effects

### 7.1 ON/OFF Effects

Each frame you send to a Display can have an on/off command/effect which you setup by clicking on the Frame|Setup menu. The complete set of commands available is as follows:

#### Jump

Immediately places the frame onto the Display as is.  
Use: On and Off Command

#### Vertical/Up

Scroll up vertically the next frame onto the Display.  
Use: On and Off Command

#### Open

This creates a curtain effect by opening the frame from the center of the Display out to the edges like an opening curtain, it has the opposite effect to CLOSE below.  
Use: On and Off Command

#### Sparkle

This command has the effect of showing a frame gradually LED by LED until the entire message is visible. The message appears to fade onto the Display.  
Use: On and Off Command

#### Wipe Left or Wipe Down

This command is like a one-sided curtain. It wipes the next frame onto the Display in the direction relating to the WIPE effect selected i.e. Left or Down.  
Use: On and Off Command

#### Close

This command is the opposite to OPEN in that it closes the frame onto the Display screen from the edges to the center like a closing curtain.  
Use: On and Off Command

#### Down

This command is the opposite of VERTICAL in that it causes the next frame to be scrolled down vertically onto the Display.  
Use: On and Off Command

#### Hold

This command only works if it is used as an off effect. It causes the frame to be kept on the Display until the next frame is drawn over it or it is scrolled off by any of the scroll effects.  
Use: Off Command ONLY

#### Background

This command when used as an off effect causes a frame to stay in the background permanently. This means that when subsequent frames are drawn off the Display the background will start to appear instead of the Display going blank.  
Use: Off Command ONLY

#### Run

With this command a frame is scrolled horizontally onto the Display screen from right to left. It is used in the setup of various text frames. Use: Off Command ONLY

## 7.2 Character Fonts

When you select a text message to send to a Display you can also select the appearance of that message on the Display screen by choosing a font from the 'Fonts:' list in the 'Display Setup' dialog box (refer to **System⇒Setup⇒Displays** section). The complete set of fonts available to date is as follows:

### Normal

This is the default character font available on a Display. With this font , maximum character limitation is 22 x 8 lines of text.

### Large

This font has a character limitation of 16 x 4 lines of text.

## 8 Maintenance

***Warning: Disconnect the power supply before you remove any Display Panels. Make sure work area is clean and clear of tools and miscellaneous items of equipment after maintenance.***

### 8.1 Maintenance Instructions

#### 8.1.1 Cleaning the Display

Routine cleaning of the Display Board is at the discretion of the operator and subject to local conditions. Use damp non-abrasive materials such as a sponge, or lint-free cloth to clean the Display. Remove difficult stains or marks with a suitable solvent. **DO NOT USE** sharp or metal objects.

#### 8.1.2 Preventative Maintenance

Inspect the Display for defects before each operation. Do a visual check for the following:

- Damaged or dirty Lens
- Defective LEDs
- Loose Cables

### 8.2 Technical Support

For technical support and spare parts, contact your nearest Data Display Customer Service Department.

***Data Display USA  
5004 Veterans Memorial Hwy.  
Holbrook, N.Y. 11741***

***Tel#: (631)218-2130 x 23  
Fax #: (631)218-2140  
E-mail: techsupport@ddusa.com***

Make sure to quote the Data Display Reference No. in the Product Specifications section of this Manual and the Serial No of the Display.

## 9 Specifications

CHARACTERISTIC	VALUE
<b>Display Features</b>	
Model	GB-96x40-UBR, Back to Back
Data Display Reference No.	DDJ15862001
Display Type	Graphics Board, 40 pixels high by 96 pixels wide
Display Board Type	GB160818-UBR
Character Size	Variable
LEDs per Pixel	1
Pixel Pitch	1.37in
LED Diameter	5mm
LED Color	Ultra-Bright Red, Elliptical
<b>Communication</b>	
EPROM	GB40X112
Protocol	MATIF
Baud Rate	9600
Addressing	Dip Switch
Data Format	8 bit, 1 stop bit, no parity
Character Set	Extended ASCII set
<b>Software</b>	
Text /Graphics	GRAFIT © Ver 1.18β
<b>Electrical</b>	
Main Power Supply	120 Volts AC
Power Consumption	900W
Fuse Value	10 Amp
<b>Housing</b>	
Housing Material	Aluminium
Housing Color	Black

Table 9.1 - Product Specifications.

Data Display Ltd