

Applying a Transition Effect

The ability to apply transitions to layouts has improved in Venus 1500 v4.

A *transition* is an animation that occurs when Venus 1500 advances from one layout to the next during a presentation.

To a single layout

Follow these steps to apply a transition effect to a single layout.

1. Select the layout from the Layout Storyboard to which you want to add a transition effect.
 - ✔ **Tip:** To select multiple layouts, hold down the <Ctrl> key as you select each layout.

2. Click the **Layout** tab on the Ribbon and click the **More** button in the Entry Transitions group. (Fig 1)

The Transitions gallery appears. To preview the transition name, simply mouse over it. (Fig 2)

3. Select a transition effect from the gallery.

An icon appears to the left of the layout in the storyboard, indicating that the transition effect has been applied. (Fig 3)

Now, you can change the Transition Properties. Transition Properties allows you to change the duration of the transition effect. For example, the longer the transition length, the slower it will play.

4. (Optional) Click the **Transition Icon** button to the left of the layout in the Layout Storyboard and select the Change Duration button.

Select the desired transition time.

- ! **Trap:** Try not to use too many different types of effects in the same presentation. Too many transition effects can distract your viewers rather than intrigue them.

To all layouts

If you want to apply the same transition effect to all layouts in a presentation, follow these steps.

1. Select the **Gold Star** button on the Layout Storyboard to select a transition to apply to all layouts. (Fig 3)

- ✔ **Tip:** To clear transitions, click on the white star button

Exercise

- **Exercise:** Open a new presentation.
- **Exercise:** Navigate to Layout 1 and apply the Fade transition effect.

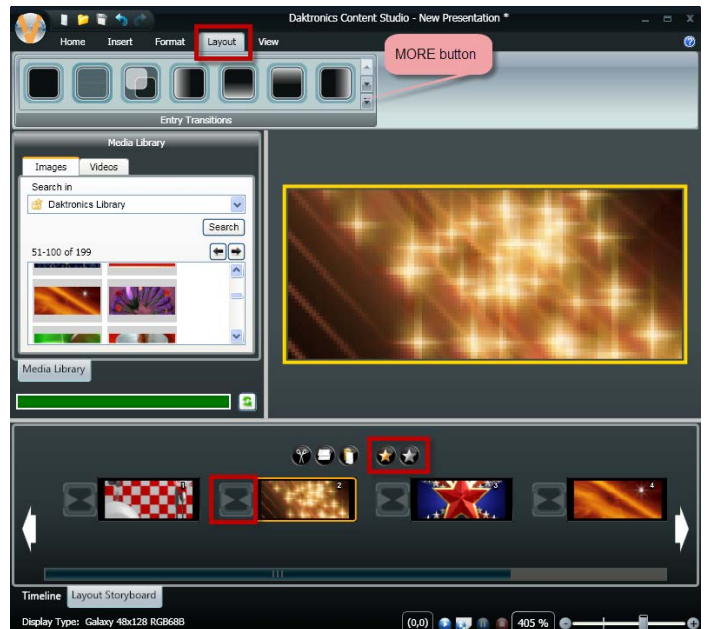


Figure 1: Click the More button in the Entry Transitions group to display the Transitions gallery.

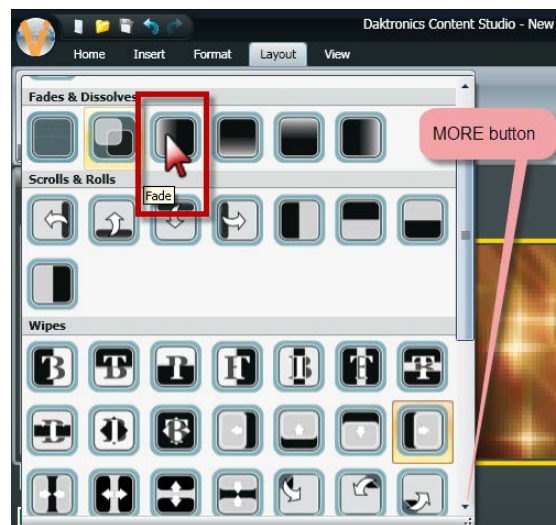


Figure 2: Mouse over a transition to see the transition name.

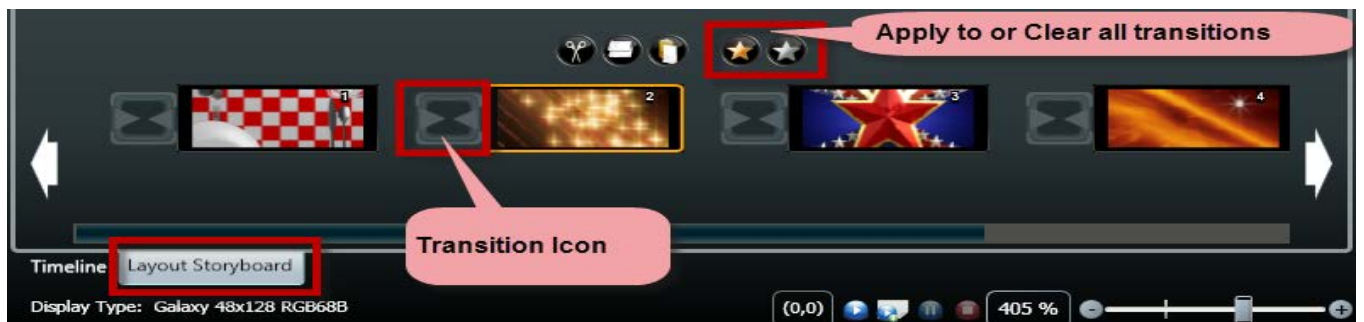


Figure 3: Select Gold Star to apply the same transition to multiple layouts.

2. Select a transition effect from the gallery.
An icon appears to the left of the layout in the storyboard, indicating that the transition effect has been applied.
Now, you have can change the Transition Properties.
 3. (Optional) Click the **Gold Star** button in the Layout Storyboard and select the Change Duration button.
Select the desired transition time to apply to all layouts.
 4. Click the **OK** button to save your changes.
The transition effect is applied to all of the layouts in the presentation.
- ! Trap:** Try not to use too many different types of effects in the same presentation. Too many transition effects can distract your viewers rather than intrigue them.