

Configuring a Display with the Configuration Wizard

The first step to using Venus 1500 software is to configure your display. The **Configuration Wizard** is the easiest way to automatically detect what displays are connected to your network source.

Configuration Wizard*

*Note: this feature will work only if the display is installed and turned ON.

1. Launch Venus 1500. Click the **Application Menu** (orange circle with the Venus logo in the top left corner)
Mouse over **Configure** and click on **Displays**.
2. The **Display Management** Window opens. Click the **Add Display...** button. (See Fig. 1)
The **Configuration Wizard** window opens and begins searching your network for a display.
3. Select your display from the list that appears then follow the prompts. If nothing appears, click on **My display is not in the list** and follow the instructions below to manually create your display. (See Fig. 2)

Other Ways To Configure Your Display

Manually Create your Display

Follow steps 1-3 above, but click the **Cancel** button in the **Configuration Wizard** window.

1. Click on **My display is not in the list**.
2. Select your **Product Family**, **height**, **width** and **color depth** of your display. If you don't have that information, contact your Sign Company or Daktronics for assistance.
3. Choose your communication type.
 - ✓ **Tips:**
 - ✓ If your display is not yet installed but you want to start building content, the communication type can be edited later.
 - ✓ If you don't know how you will be communicating to the display, choose **Ethernet Communication** and when prompted for an address, enter the Daktronics default IP address: **172.16.192.25**
4. Click **Continue** and enter in the name you want to give your display.
 - ✓ **Tip:** If you have more than one display, giving each display a unique name such as Store #1234 or Branch Bank will help you in identifying which display you are creating content for or sending content to.
5. Select your **Time Zone** and enable **Daylight Saving Time** if recognized where you live. Click **Continue**.
6. Choose **NO** and then **FINISH** to complete the display configuration.
7. When prompted to download the media kit, choose **YES**
8. Congratulations! You can now begin creating spectacular content for your new Daktronics display!

Exercise

Exercise: Create a display following the instructions given.

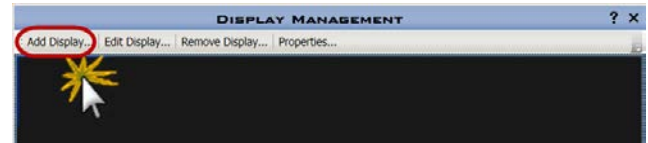


Figure 1: Display Management Window. Click on [Add Display]

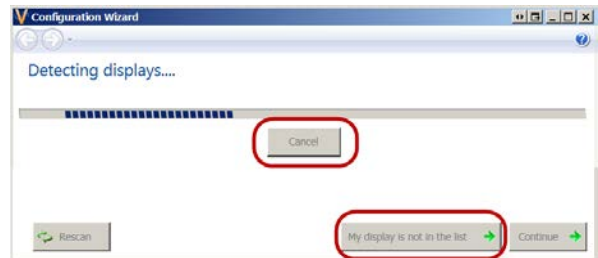


Figure 2: Configuration Wizard auto configuration. [Cancel] and [My display is not in the list]

- ⓘ **Trap:** Consult zoning restrictions with city authorities to ensure that your messages do not infringe any restriction laws.
- ✓ **Tip:** If you are experiencing display communication problems, search our online help at www.daktronics.com/support or contact your sign company.