

Changing Content Studio's Default Options

You may find that the default settings in Content Studio do not always fit your needs. This lesson is not so much an exercise as it is a reference on how to customize Content Studio by changing its default settings.

1. Click on the Orange V and select Content Studio Options at the bottom. See Figure 1.
2. Content Studio Options will appear in a new window. See Figure 2.
 - A. Environment: This is where you can change the default time for Layouts and Pages. The default setting is 10 seconds, but can be changed to meet your needs. We recommend 3 – 5 seconds per layout. Your entire presentation (set of layouts with one thought) should not be longer than 15 seconds. The average is around 8 seconds. This is all dependent on zoning restrictions in your local municipality. See Figure 3.
 - B. Plug-ins: You can enable or disable your time line feature with the plug-ins section. If you place a check mark in the box in front of Timeline, a new tab will appear in bottom left of Content Studio. Timeline is another way to view your presentation and your layouts. See Figure 4.
 - C. Text Filtering: These are words that the FCC has deemed inappropriate for the airways. They are not case sensitive and when saving all text is scanned. If a filtered word is in the presentation, the user is not allowed to save. If you would like to add a word to the prohibited word list, just type it in and click on the plus sign to the right of the field. See Figure 5.
 - D. About: Has Daktronics contact information should you have questions or concerns.

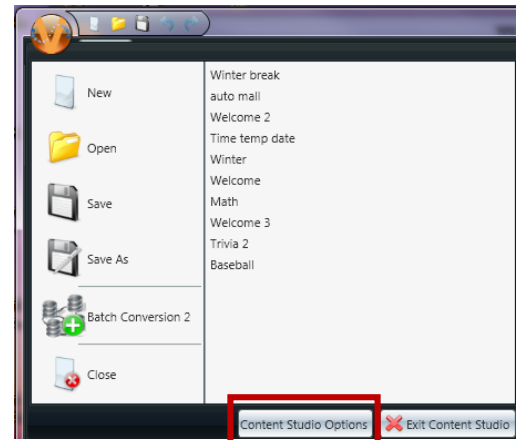


Figure 1. Content Studio Options located within the Content Studio Application menu

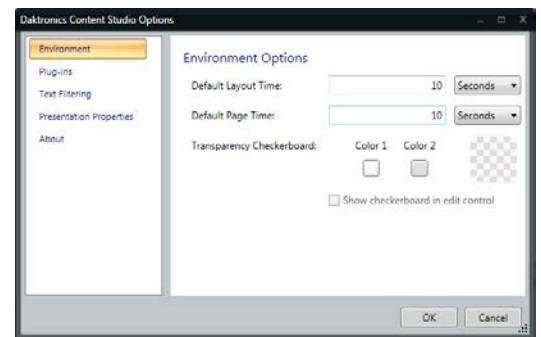


Figure 2. Content Studio Options

Environment Options

Default Layout Time: Seconds

Default Page Time: Seconds

Figure 3. Environment

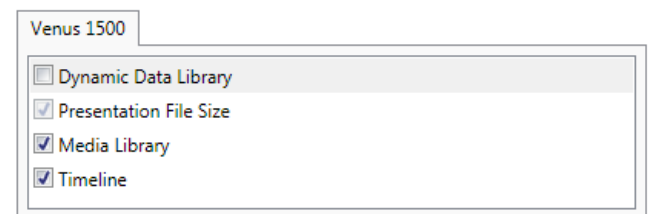


Figure 4. Plug-ins.

Type in a custom word or phrase to be added to the list

Figure 5. Text Filtering