

Creating a tabular layout

Datalist templates only allow for a single field or two fields stacked vertically and only four datalists can be used per layout. Using the Dynamic Data Library plugin, you can drag/drop each individual column of data onto the layout. We'll take a look at doing this using an XML feed for a Safety Report. This feature is only compatible with DMP-8000 players and Venus 1500 v4.18 or higher.

1. Create a new XML source using your feed or our example feed. For help, open the worksheet **Configuring and Editing XML Feeds**
2. Enable the **Dynamic Data Library** if not already available. Refer to Knowledge Base article DD2014163 from the **Daktronics** support site. Once enabled, it will appear on the left side of the application. In the **Category** more dropdown, select the feed. In our example, we chose XML. See Fig. 1
3. Drag and drop the first **field**. See Fig. 2
4. Click the **field** in your layout to activate the **Field Properties** tab.
5. Click the **Field Properties** tab and in the **Sample** field of the **Editor Information** group, you can change the field's **Sample** data to reflect the information making it easier for you to layout the fields.
 - ✔ **Tip:** Click the **Preview** to see what data populates the field to help you name the Sample!
 - ⚠ **Trap:** You may need to extend the text box width so that content is not cut off when playing. You'll see this when you preview.
6. Drag and drop the next **field**. Position on the layout. Change the **Result** in the **Table Source** group to change which row of the data source should be displayed. Continue for all fields.
7. Format as desired with colored backgrounds, formatted fonts, etc.
 - ✔ **Tip:** Add a text box, then fill with color and stretch out to create a partial background color. Right click and select Send to Back to position behind your table.

Exercise

Exercise: Create a table using the Safety XML from Configuring and Editing XML Feeds

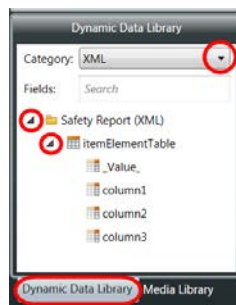


Figure 1: Dynamic Data Library Category dropdown, selecting fields

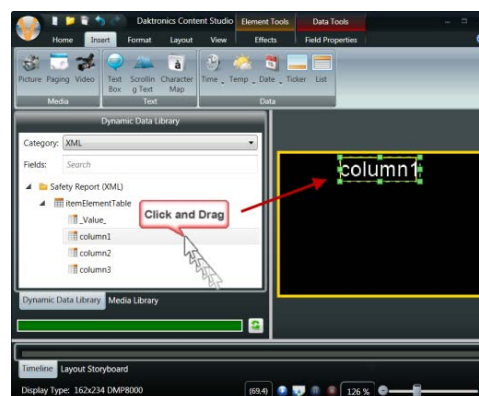


Figure 2: Drag and drop fields to layout

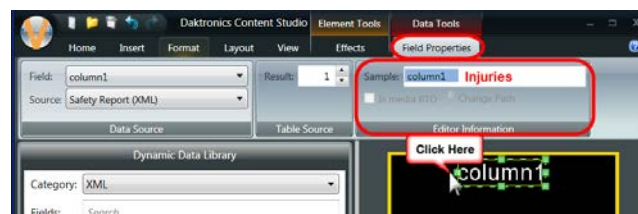


Figure 3: Changing the Sample field to reflect what information is shown on the layout

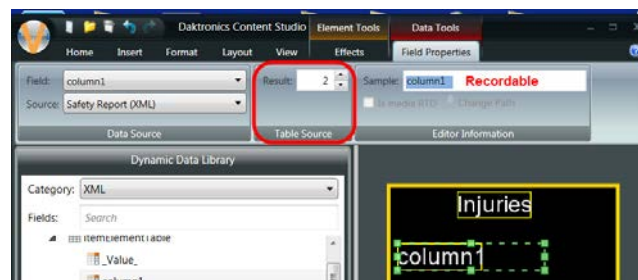


Figure 4: Select Results

Injuries		
	Mar 2014	
Recordable	1	6
Lost Time	0	2
Total	3	15